

ORDER DIRECT OR CALL FOR AN AUTHORIZED
IMPACT DEALER NEAR YOU.

317-852-3067

FAX 317-852-8945

IMPACTTRACEPRODUCTS.COM

IMPACT IS A DIVISION OF MASTERCRAFT SAFETY, INC

IMPACT
by MasterCraft SAFETY

1531 Northfield Drive, Suite 400
Brownsburg, IN • 46112



IMPACT **MasterCraft** **SAFETY**

The Best of Both Worlds Have United

When the opportunity to purchase Impact from Bill Simpson presented itself to Robbie Pierce, CEO of MasterCraft Safety, he saw the chance to make racers everywhere safer; including himself. Based in Santee, California and centered in close-proximity to the elusive Sonoran desert and the locale of the legendary Baja 1000, it is natural to understand why MasterCraft Safety is a company better known for its off-road racing safety products.

Since 1970, MasterCraft Safety has become the leader and safety advocate for the off-road racing community through pioneering seat designs and occupant restraints. With the addition of driving suits in 2008, the company gained mainstream motorsports appeal in the NASCAR circles as newcomers such as Justin Lofton and seasoned veterans such as Jason Keller made the switch to the MasterCraft Safety suits and racing restraints. As the driving suits and restraints continued to gain momentum and popularity to a broader audience, it quickly became obvious to company CEO, Robbie Pierce, that an expanded product offering was necessary to continue his vision as a safety pioneer. MasterCraft Safety, under the direction of Pierce, quickly set its sights on expanding into helmets, shoes, gloves, and various other crucial motorsports safety products.

With a history deeply rooted in racing safety and a unique sense of understanding driver needs, Robbie Pierce and MasterCraft Safety was the ideal choice to carry forward Impact's vision and Bill's legacy when the opportunity arose. According to Simpson, "As a top-level racer in the SCORE series, Robbie understands the inherent dangers of competing and the importance of safety equipment. Drivers have come to rely on our products every time they strap into their race vehicle and that is a reality both Robbie and I share and something neither of us take lightly."

The merging of these two renowned safety companies combines a powerful wealth of expertise in a broad range of motorsports. MasterCraft Safety's long standing reputation combined with Impact's revolutionary product lines make these two companies a perfect team which will further improve racer safety and lead the industry in innovations and style in the coming years.

Moving forward, look for MasterCraft Safety's design and influence to find its way into a host of new Impact products while Bill Simpson's legacy will continue through the development of entirely new safety products custom tailored to meet the racer's needs; whether it is dirt or asphalt. Throughout the evolution of this acquisition, gradual changes will be made as operations are slowly integrated. For the time being, both brands will operate separately, maintaining a focus on the loyal racers and enthusiasts who have created the identity of each individual company.

CONTENTS

Helmets pg. 2

Suits pg. 16

Order Forms pg. 21

Crew Shirts pg. 29

Gloves pg. 30

Footwear pg. 32

Chutes pg. 34

Restraints/Nets/Straps pg. 36

Lifestyle pg. 44

Bags/Cases pg. 48

Eyewear pg. 50

NO
REFUNDS OR EXCHANGES
AFTER **30 DAYS**



*Shown with OPTIONAL low profile oval air port. See note below



*Shown with OPTIONAL low profile oval air port. See note below



CF VAPOR™

SNELL 2010 CERTIFIED

The product of continuous research in our shop and at the track, the Carbon Fiber Vapor™ features aerodynamic, ultra lightweight construction and an exclusive air circulation system that includes louvered chinbar vents, cheek vents and slider forehead vents. A specially designed "Ripple Effect" aerodynamic boundary layer is built into the shell to stabilize the helmet under high speed airflow. In addition to our "intelligent" Gray Matter liner (a single-piece, variable-density liner upholstered with fire-retardant fabric) the CF Vapor is designed with a standard eyepoint and comes standard with a 1/8" polycarbonate shield with three-position detent. The CF Vapor also utilizes a fire-retardant Kevlar® chinstrap with dual D-Ring closure and our interchangeable cheek pad system for a perfect fit.

Adult Sizes: XS/S/M/L/XL
12099 • \$1500

CF AIR VAPOR™

SNELL 2010 CERTIFIED

Made of ultra lightweight carbon fiber technology taken from the aerospace industry, the Carbon Fiber Air Vapor™ features a completely new solution to air induction that cools, de-fogs and reduces air contamination inside the helmet. The Venturi Cowl induction system circulates air around the head through whisper channels, creating positive air pressure inside the helmet that prevents contaminated air from entering. The result is cool, clean air and a fog-free shield all race long. Like all of our helmets, the Air Vapor comes with our Gray Matter (a variable-density liner covered in fire-retardant fabric) interchangeable cheekpads for a perfect fit, a fire-retardant Kevlar® chinstrap with dual D-Ring closure, and our 1/8" polycarbonate shield with three-position detent. Adult Sizes: XS/S/M/L/XL

*All air helmets are offered standard with the round air inlet port. Low profile models with oval air port (shown above) are available as a special order. Please inform your sales representative if you are in need of the low profile (oval) option.
NOW AVAILABLE WITH SIDE AIR!
16099 • \$1500

CF DRAFT™

SNELL 2010 CERTIFIED

Our Carbon Fiber Draft™ helmet is another safety solution from Impact that has tried and true features for racers of every kind. The "Ripple Effect" aerodynamic modeling controls airflow around the helmet for stability and the extended chin foil captures downward airflow to reduce helmet lift and buffeting. A high-bypass air induction system with adjustable forehead vents circulates air around the head and face as stale air is channeled to dual rear exhaust vents. Constructed from ultra lightweight exotic carbon fiber, the Draft includes Impact's fire-retardant, variable density, single-piece Gray Matter helmet liner, a standard eyepoint with a three-position detent 1/8" polycarbonate shield, interchangeable sizing cheekpads and a fire-retardant Kevlar® chinstrap with dual D-Ring closure. Adult Sizes: XS/S/M/L/XL

19299 • \$1500
* Shown with OPTIONAL Amber Shield.

CF AIR DRAFT™

SNELL 2010 CERTIFIED

Utilizing a new low-profile version of our popular Venturi Cowl air induction system and made from ultra lightweight space age carbon fiber, the Carbon Air Draft™, will keep you cool, clean and fog-free all race long. Clean air is circulated through whisper channels, creating positive air pressure inside the helmet that prevents contaminated air from entering. Our "intelligent" Gray Matter™ liner (a variable-density, single-piece helmet liner upholstered in fire-retardant fabric) interchangeable cheekpads for a perfect fit, a fire-retardant Kevlar® chinstrap with dual D-Ring closure and our wide eyepoint and 1/8" polycarbonate shield with three-position detent round out this exciting helmet. Adult Sizes: XS/S/M/L/XL

*All air helmets are offered standard with the round air inlet port. Low profile models with oval air port (shown above) are available as a special order. Please inform your sales representative if you are in need of the low profile (oval) option.
19399 • \$1500

CF AIR DRAFT SIDE AIR™ NOW AVAILABLE!!!!

Impact has now created the ultimate DIRT TRACK and OFF ROAD helmet by revising our CF Air Draft helmet to include specific features for the off road racer. For this exciting new helmet, we've rerouted the air channels in the helmet to better distribute air on the backside of the visor eliminating potential wind noise in communication devices.

We've also added a foam helmet port gasket to help seal out dust and added a chin deflector to prevent dirt and debris from entering the helmet from below. The CF Air Draft SA also comes standard with a removable helmet skirt for even more protection and safety.

Adult Sizes: XS/S/M/L/XL
19699 • \$1500



CALL TO ORDER
317-852-3067
or visit www.impactraceproducts.com



CF SUPERSPORT™

SNELL 2010 CERTIFIED

The Carbon Fiber Supersport™ is the newest model in the evolution of our regular Supersport helmet line. This year we've added extra ventilation vents at three points along the crown of the helmet that can be individually opened and closed via toggle switch. This ventilation system keeps your head cool during races and helps to keep your shield clear and fog-free. The new SS is an example of Impact's constant research, testing and refinement of our products to meet racers' needs. Four louvered chin bar vents also bring in cool air for a very breathable helmet. The new Supersport is yet another step up for the helmet that works for both auto and motorcycle racers in all series. Constructed from ultra lightweight exotic carbon fiber, the Supersport includes Impact's fire-retardant, variable-density, single-piece Gray Matter helmet liner, our wide eyeport with a three-position detent 1/8" polycarbonate shield, interchangeable sizing cheekpads and a fire-retardant Kevlar® chinstrap with dual D-Ring closure.

Adult Sizes: XS/S/M/L/XL
17199 • \$1095



CF EUROSPORT™

SNELL 2010 CERTIFIED

The Carbon Fiber Eurosport™ helmet is based on our popular Supersport model. Using our knowledge of airflow around cockpits of formula cars and sports cars, the Eurosport has been specifically designed with the open cockpit racer in mind. The airfoil on the rear of the helmet helps stabilize the head using laminar airflow and cuts turbulence around the helmet. The Eurosport has three strategically placed crown vents that open individually via toggle switches for cool airflow all around the head. Our "intelligent" Gray Matter liner (a variable-density, single-piece helmet liner upholstered in fire-retardant fabric), interchangeable cheekpads for a perfect fit, a fire-retardant Kevlar® chinstrap with dual D-Ring closure, wide eyeport and our 1/8" polycarbonate shield with three-position detent round out this exciting new helmet.

Adult Sizes: XS/S/M/L/XL
17799 • \$1095



Bottled Air intake port on back of helmet.



CF NITRO™

SNELL 2010 CERTIFIED

Our Carbon Fiber Nitro™ helmet is specifically made with the Nitro and Alcohol Drag racer in mind. We know how bad the fumes can be in your cockpit and the Nitro has been engineered to alleviate those issues with its replaceable filter system and flexible bottled air intake port. The built-in SFI 3.3/10 Nomex® skirt helps keep air inside the helmet clean and adds another facet of safety against flames and smoke and a braided kevlar gasket lines the eyeport for an even better seal. The Nitro has a built-in D-ring at the chin bar to keep your head restrained during those hard launches and also includes Impact's fire-retardant, variable density, single-piece Gray Matter helmet liner, a standard eyeport with a three-position detent 1/8" polycarbonate shield, interchangeable sizing cheekpads and a fire-retardant Kevlar® chinstrap with dual D-Ring closure.

Adult Sizes: XS/S/M/L/XL

18099 • \$1500



CALL TO ORDER
317-852-3067
or visit www.impactraceproducts.com

CARBON HELMETS 5



Shown in Gloss Black.



*Shown with OPTIONAL low profile oval air port. See note below

Shown in Gloss Black.



Shown in Flat Black.



*Shown with STANDARD round air port. See note below

Shown in Silver.

VAPOR™

SNELL 2010 CERTIFIED

The Vapor™ is the result of extensive 3D modeling to create a specially designed "Ripple Effect" aerodynamic boundary layer to stabilize the helmet under high speed airflow. Constructed of super lightweight Carbon-Kevlar® tri-weave, a composite taken from the aerospace industry, the Vapor also includes Impact's Gray Matter helmet liner, our standard eyeport with a three-position detent 1/8" polycarbonate shield, interchangeable sizing cheekpads and a fire-retardant Kevlar® chinstrap with dual D-Ring closure. **NOW AVAILABLE WITH SIDE AIR!**

Adult Sizes: XS/S/M/L/XL

Colors: White/Silver/Gloss Black/Flat Black (add \$20 for Flat Black)

12099 • \$795



MADE OF OUR CARBON-KEVLAR® TRI-WEAVE COMPOSITE

AIR VAPOR™

SNELL 2010 CERTIFIED

The Impact Air Vapor™ is manufactured in our Carbon-Kevlar® tri-weave and features our Venturi Cowl induction system, which circulates air around the head through whisper channels, creating positive air pressure inside the helmet that prevents contaminated air from entering. The result is cool, clean air and a fog-free shield all race long and the Air Vapor includes Impact's fire-retardant, variable density, single-piece Gray Matter helmet liner, a standard eyeport with a three-position detent 1/8" polycarbonate shield interchangeable sizing cheekpads and a fire-retardant Kevlar® chinstrap with dual D-Ring closure.

Adult Sizes: XS/S/M/L/XL

Colors: White/Silver/Gloss Black/Flat Black (add \$20 for Flat Black)

*All air helmets are offered standard with the round air inlet port. Low profile models with oval air port (shown above) are available as a special order. Please inform your sales representative if you are in need of the low profile (oval) option..

NOW AVAILABLE WITH SIDE AIR!

16099 • \$849



* Shown with OPTIONAL Dark Smoke Shield (add \$55).

DRAFT™

SNELL 2010 CERTIFIED

Our Draft™ helmet features our "Ripple Effect" aerodynamic modeling, which controls airflow around the helmet for stability, and an extended chin foil that captures downward airflow to reduce helmet lift and buffeting. A high-bypass air induction system with adjustable forehead vents circulates air around the head and face as stale air is channeled to dual rear exhaust vents. Constructed from lightweight Carbon-Kevlar® tri-weave, the Draft includes Impact's fire-retardant, variable density, single-piece Gray Matter helmet liner, a standard eyeport with a three-position detent 1/8" polycarbonate shield, interchangeable sizing cheekpads and a fire-retardant Kevlar® chinstrap with dual D-Ring closure.

Adult Sizes: XS/S/M/L/XL

Colors: White/Silver/Gloss Black/Flat Black (add \$20 for Flat Black)

19299 • \$755



AIR DRAFT™

SNELL 2010 CERTIFIED

Our Air Draft™ is made with lightweight Impact's Carbon-Kevlar® tri-weave, and its air induction port will help keep you cool, clean and fog-free all race long. Clean air is circulated through whisper channels, creating positive air pressure inside the helmet that prevents contaminated air from entering. Our "intelligent" Gray Matter liner, interchangeable cheekpads for a perfect fit, a fire-retardant Kevlar® chinstrap with dual D-Ring closure, wide eyeport and our 1/8" polycarbonate shield with three-position detent round out the Air Draft.

Adult Sizes: XS/S/M/L/XL

Colors: White/Silver/Gloss Black/Flat Black (add \$20 for Flat Black)

*All air helmets are offered standard with the round air inlet port (shown above). Low profile models with oval air port as a special order. Please inform your sales representative if you are in need of the low profile (oval) option.

19399 • \$795



AIR DRAFT SIDE AIR™ NOW AVAILABLE!!!!

Impact has now created the ultimate DIRT TRACK and OFF ROAD helmet by revising our Air Draft helmet to include specific features for the off road racer. For this exciting new helmet, we've rerouted the air channels in the helmet to better distribute air on the backside of the visor eliminating potential wind noise in communication devices. We've also added a foam helmet port gasket to help seal out dust and added a chin deflector to prevent dirt and debris from entering the helmet from below. The Air Draft SA also comes standard with a removable helmet skirt for even more protection and safety.

Adult Sizes: XS/S/M/L/XL

19699 • \$795

MADE IN THE USA

CALL TO ORDER
317-852-3067
or visit www.impactraceproducts.com

COMPOSITE HELMETS 7



EUROSPORT™ SNELL 2010 CERTIFIED

The graphic above shows the airflow in and around our Eurosport™ helmet, the next evolution of the Supersport™ model, that has been specifically designed with the open cockpit racer in mind. The airfoil on the rear of the helmet helps stabilize the head using laminar airflow and cuts turbulence around the helmet by directing it over the head and creating a stabilizing air pocket at the rear. The crown has three strategically placed vents that open individually via toggle switches for cool airflow all around the head while chinbar vents bring fresh air in around the mouth. Our "intelligent" Gray Matter liner, interchangeable cheekpads for a perfect fit, a fire-retardant Kevlar® chinstrap with dual D-Ring closure, wide eyepoint and our 1/8" polycarbonate shield with three-position detent round out this exciting new helmet.

Adult Sizes: XS/S/M/L/XL

Colors: White/Silver/Gloss Black/Flat Black
(add \$20 for Flat Black)

17799 • \$499



MADE IN THE
USA

CALL TO ORDER
317-852-3067
or visit www.impactraceproducts.com



EUROSPORT™

*Shown in White with optional
Blue Chrome shield.



Shown in White

SUPERSPORT™ SNELL 2010 CERTIFIED

We've listened to racers' needs and added new standard features to the Supersport™ in 2009 by adding vents at three points along the crown of the helmet that can be individually opened and closed via toggle switch. This ventilation system keeps your head cool during races and helps to keep your shield fog-free and clear all race long. Constructed from lightweight composites, the Supersport includes Impact's fire-retardant, variable-density, single-piece Gray Matter helmet liner, a wide eyepoint with a three-position detent 1/8" polycarbonate shield, interchangeable sizing cheekpads and a fire-resistant Kevlar® chinstrap with dual D-Ring closure.

Adult Sizes: XS/S/M/L/XL

Colors: White/Silver/Gloss Black/Flat Black
(add \$20 for Flat Black)

17199 • \$399



MADE OF OUR
CARBON-KEVLAR®
TRI-WEAVE COMPOSITE

DRAG CHAMP™

SNELL 2010 CERTIFIED

The Impact Drag Champ™ helmet is a sealed-helmet solution for the closed cockpit drag racer. It features a radical chinbar design that covers the mouth and nose and acts as a built-in breath deflector and has a built-in SFI 3.3/1 Nomex® skirt. This special version of our Champ has our superb air intake port for your bottled air system and a D-ring at the chin to strap in for those excessive G's you encounter. Our "intelligent" Gray Matter liner, a variable-density, single-piece helmet liner upholstered in fire-retardant fabric, interchangeable cheekpads for a perfect fit, a fire-retardant Kevlar® chinstrap with dual D-Ring closure and our 1/8" polycarbonate shield with three-position detent come standard on the Drag Champ as well.

Adult Sizes: XS/S/M/L/XL/2X
Colors: White/Silver/Gloss Black/Flat Black
(add \$20 for Flat Black)

13599 • \$749



CALL TO ORDER
317-852-3067
or visit www.impactraceproducts.com



*2X CHAMP and 2x DRAG CHAMP helmets have smooth helmet crowns.

CHAMP™

SNELL 2010 CERTIFIED

The Impact Champ™ is made of lightweight advanced composites and features our radical chinbar design, an expanded eyeport, two slotted forehead vents and our unique "Ripple Effect" boundary layer on the helmet crown. Our "intelligent" Gray Matter liner, a variable-density, single-piece helmet liner upholstered in fire-retardant fabric, interchangeable cheekpads for a perfect fit, a fire-retardant Kevlar® chinstrap with dual D-Ring closure and our 1/8" polycarbonate shield with three-position detent are also included.

NOW AVAILABLE WITH SIDE AIR!

Adult Sizes: XS/S/M/L/XL/2X
Colors: White/Silver/Gloss Black/Flat Black
(add \$20 for Flat Black)

13099 • \$489



Shown in Flat Black.

NITRO™

SNELL 2010 CERTIFIED

The Impact Nitro™ helmet is specifically made with the Nitro and Alcohol Drag racer in mind. The Nitro has been engineered to alleviate fumes and contaminated air with its replaceable filter system and flexible bottled air intake port. The built-in SFI 3.3/10 Nomex® skirt helps keep air inside the helmet clean, and adds another facet of safety against flames and smoke, and a braided kevlar gasket lines the eyeport for an even better seal. The Nitro also has a built-in D-ring at the chin bar to keep your head restrained during those hard launches and also includes Impact's Gray Matter helmet liner, our standard eyeport with a three-position detent 1/8" polycarbonate shield, interchangeable sizing cheekpads and a fire-retardant Kevlar® chinstrap with dual D-Ring closure.

Adult Sizes: XS/S/M/L/XL
Colors: White/Silver/Gloss Black/Flat Black
(add \$20 for Flat Black)

18099 • \$749

* Replacement filters are \$22 per pair.



SUPER CYCLONE™

SNELL 2010 CERTIFIED

The Super Cyclone™ is specifically built for the drag bike racer and features our high-brow eyeport with maximum visibility when riding in the full race position. The arched shape at the rear of the helmet fits naturally around the back of your neck for more comfort when you're tucked down. The Cyclone features all the same high-quality Impact signatures like our Gray Matter liner with fire-retardant covering, Kevlar® chinstrap with D-Ring closure and our 1/8" polycarbonate shield.

Adult Sizes: XS/S/M/L/XL
Colors: White/Silver/Gloss Black/Flat Black
(add \$20 for Flat Black)

15199 • \$459



VELOCITY™

SNELL 2010 CERTIFIED

The Velocity™ features a unique design geometry that optimizes coverage, safety and visibility in an open-face helmet. The visor was designed to have aerodynamic slots that direct airflow and stabilize the helmet in high speed situations. The Velocity also has a detent feature built into the design that helps keep goggles centered on the head. It also includes Impact's fire-retardant, variable density, single-piece Gray Matter helmet liner, interchangeable sizing cheekpads and a fire-retardant Kevlar® chinstrap with dual D-Ring closure.

Adult Sizes: XS/S/M/L/XL/2X
Colors: White/Silver/Gloss Black/Flat Black
(add \$20 for Flat Black)

15099 • \$269



NOSTALGIA DRAG MASK™

Introduced in 2010 for the Nostalgia Class driver, Impact presents our retro-styled mask based on the same design as the originals back in the 1960s but using the modern high-quality materials available today. Made with an aluminized Kevlar outer layer and our high-quality Nomex® inner layers with built in filter mask system with replaceable filters to keep those noxious fumes out.

NOT SFI CERTIFIED.

Sizes: One Size Fits All
Colors: Aluminized Kevlar only

77600 • \$295

(see pg.35 for Nostalgia Over-Boots)



MADE IN THE
USA

COMPOSITE HELMETS

CHARGER™ SNELL 2010 CERTIFIED

The Charger™ is designed with an oversized wrap-around eyeport for a wide-angle panoramic view and an extended chinbar to stabilize the airflow around the helmet. Constructed of lightweight composites taken from the aerospace industry, the Charger also includes Impact's fire-retardant, variable-density, single-piece Gray Matter helmet liner, a standard eyeport with a three-position detent 1/8" polycarbonate shield, interchangeable sizing cheekpads and a fire-retardant Kevlar® chinstrap with dual D-Ring closure. **NOW AVAILABLE WITH SIDE AIR!**

Adult Sizes: XS/S/M/L/XL/2X
Colors: White/Silver/Gloss Black/Flat Black
(add \$20 for Flat Black)
14099 • \$459.95



CALL TO ORDER
317-852-3067
or visit www.impactraceproducts.com

CREW FUELER

The Fueler helmet features an expanded all-axis eyeport for a maximum field of vision, so there's no need to turn your head to see the whole scene around you, which is perfect for maintaining awareness when the action starts in your pit box and you need to perform at your best.

Adult Sizes: XS/S/M/L/XL
Colors: White/Silver/Gloss Black/Flat Black
(add \$20 for Flat Black)
19100 • \$329



*Shown with OPTIONAL low profile oval air port. See note below

SUPER CHARGER™ SNELL 2010 CERTIFIED

The Super Charger is our air version of our popular Charger helmet, designed with an oversized wrap-around eyeport for a wide-angle panoramic view and an extended chinbar to stabilize the airflow around the helmet and includes our Head Dress air induction system. Constructed of lightweight composites taken from the aerospace industry, the Charger also includes Impact's fire-retardant, variable-density, single-piece Gray Matter helmet liner, a standard eyeport with a three-position detent 1/8" polycarbonate shield, interchangeable sizing cheekpads and a fire-retardant Kevlar® chinstrap with dual D-Ring closure. ***All air helmets are offered standard with the round air inlet port. Low profile models with oval air port (shown above) are available as a special order. Please inform your sales representative if you are in need of the low profile (oval) option. NOW AVAILABLE WITH SIDE AIR!**

Adult Sizes: XS/S/M/L/XL/2X
Colors: White/Silver/Gloss Black/Flat Black
(add \$20 for Flat Black)
17099 • \$539



R/C CREW OFFICIAL

The R/C Official helmet features a wide open design for those track officials and crew members that need a minimum-coverage helmet. We've designed this helmet with radio headset and communications in mind.

Adult Sizes: XS/S/M/L/XL
Colors: White/Silver/Gloss Black/Flat Black
(add \$20 for Flat Black)
15500 • \$229



X-LITE OTW™

Impact's new over-the-wall helmet is the lightest and most open-faced helmet going over the wall today. Made of the same composite material all our driver's helmets are, this crew helmet is the answer for comfort and safety. The X-Lite OTW™ comes with our "intelligent" Gray Matter liner, a variable-density, single-piece helmet liner upholstered in fire-retardant fabric, chinstrap with dual D-ring closure and features a replaceable visor that provides added coverage for safety and help keep the sun out of your eyes when the pits go "hot."

Adult Sizes: XS/S/M/L/XL
Colors: White/Silver/Gloss Black/Flat Black
(add \$20 for Flat Black)
19000 • \$239



The 1320 is Impact's answer for the racer looking for an entry-level helmet without sacrificing any safety whatsoever. The 1320 is affordable but does not cut any corners on quality or safety, it's made by hand with the same exacting standards as the rest of our helmet line and comes with all of our high-quality features as always including: our "intelligent" Gray Matter liner, a variable-density, single-piece helmet liner upholstered in fire-retardant fabric, interchangeable cheekpads for a perfect fit, a fire-retardant Kevlar® chinstrap with dual D-Ring closure, wide eyeport and our 1/8" polycarbonate shield with three-position detent are also included.

Adult Sizes: XS/S/M/L/XL
Colors: White/Silver/Gloss Black/Flat Black
(add \$20 for Flat Black)
14599 • \$295



*Shown with OPTIONAL low profile oval air port. See note below

SUPERSPORT AIR™ SNELL 2010 CERTIFIED

The Supersport Air™ features an air induction system we call the Head Dress™ System, our exclusive solution to fresh air, cooling and air contamination. Speed Channels™ concentrate airflow across the head and super-wide eyeport shield and our low-profile air induction port accepts all common on-board and self-contained air attachments. The SS Air also includes our "intelligent" Gray Matter liner, a variable-density, single-piece helmet liner upholstered in fire-retardant fabric, replaceable cheekpads for a perfect fit, wide eyeport, a fire-retardant Kevlar® chinstrap with dual D-Ring closure and our 1/8" polycarbonate shield with three-position detent. ***All air helmets are offered standard with the round air inlet port. Low profile models with oval air port (shown above) are available as a special order. Please inform your sales representative if you are in need of the low profile (oval) option. NOW AVAILABLE WITH SIDE AIR!**

Adult Sizes: XS/S/M/L/XL
Colors: White/Silver/Gloss Black/Flat Black
(add \$20 for Flat Black)
17699 • \$434



MX CREW HELMET

NEW FOR 2011! Impact is proud to release our new crew helmet. Based on our current OTW Crew shell but with a chin guard that supplies more coverage and a new adjustable visor that is longer to provide more sun blockage and protection from falling debris. Constructed of our high-end composite materials, it also includes Impact's fire-retardant, variable density, single-piece Gray Matter helmet liner and a fire-retardant Kevlar® chinstrap with dual D-Ring closure.

Adult Sizes: XS/S/M/L/XL
Colors: White/Silver/Gloss Black/Flat Black
(add \$20 for Flat Black)
19500 • \$249



MADE IN THE
USA

COMPOSITE HELMETS



CALL TO ORDER
317-852-3067
 or visit www.impactraceproducts.com



HELMET BAG

Our helmet bag is extra large to carry your helmet plus accessories and has a soft abrasion-resistant lining to protect your gear. It also features a durable nylon shell and 2/3 radius zipper for easy access.
71000 • \$30



HELMET DRYER

Keep your helmet dry between runs/heats with our helmet dryer. It features a single speed low-amp fan and has rubber stripping around the base to protect surfaces.
10000 • \$85



CHEEK PADS

Don't buy a new helmet if it doesn't fit perfectly, all of our helmets can be "resized" using our interchangeable cheek pads, so no matter what shape of face/head you have, our helmets are sure to fit. Hook and loop attachment for fast changes. Comes in three sizes: thin, standard or thick.
11111 • \$21

OPTIONS TO ADD TO YOUR HELMET

Breath Deflector:	\$10
Shield Pivot Kit:	\$11
Shield Foam Kit:	\$10
Angled Air Ports:	\$45 (Air Draft and Air Vapor only)
D-ring Installation:	\$10
Nomex® Helmet Skirt:	2-layer \$27 / 3-layer \$42
Helmet Support Strap:	\$19

Impact will install CUSTOMER SUPPLIED head and neck restraint posts on your helmet for \$10. You supply the posts and your receipt of purchase, and we'll install them for you.



HELMET SUPPORT

SFI 3.3 CERTIFIED
 High density compression foam increases its resistance as pressure on it increases which helps control head and neck roll. Foam can be shaved for a perfect custom fit if needed.
 SFI Certified. Colors: Black/Red/Blue
74500 • \$39



SHIELD BAG

Hold up to two shields in our handy shield carrying case that comes with a soft, yet sturdy material outside and an optical quality cloth inside to separate the two. Throw this inside your helmet bag or gear bag to bring along those extra shields and tear-offs.
 Colors: Black
81500 • \$10

ALUMINUM TEAR-OFF POSTS

These aluminum tear-off posts are a great addition to any helmet. Works with any Impact shield and brand of tear-off.
10000 • \$10



MINI VAPOR™

SNELL SA2010 CERTIFIED

Finding and fitting a helmet for your ever-growing 5 to 10 year-old racer just got easier with Impact's line of Mini helmets. The Mini Vapor™ youth helmet features our Quick Fit Inserts (QFI), which are memory foam sizing pads (included) to adjust the fit of the helmet all the way from Youth Small to Youth Large without having to buy a new helmet. Certified and approved for use in QMA/WKA/NHRA/IKF series.
 Sizes: One Size will adjust to fit Youth Small - Large
 Colors: White/Silver/Gloss Black/Flat Black (add \$20 for Flat Black)
11399 • \$375



MINI CHAMP™

SNELL SA2010 CERTIFIED

Our Mini Champ™ is also designed to be the perfect solution for growing youth racers. Comes with the same QFI pad system to "size" the helmet from a Youth Small to Youth Large as your racer grows. Certified and approved for use by QMA/WKA/NHRA/IKF series.
 Sizes: One Size will adjust to fit Youth Small - Large
 Colors: White/Silver/Gloss Black/Flat Black (add \$20 for Flat Black)
11499 • \$329



YOUTH HELMET SIZING

Mini Vapor and Mini Champ

Impact Racing Size:	Small - Two Inserts	Medium - One Insert	Large - No Inserts
Hat Size:	6 1/8 to 6 1/4	6 3/8 to 6 1/2	6 5/8 to 6 3/4
Inch Size:	19 to 19 1/4	19 1/2 to 20	20 1/2 to 21
CM Size:	49 to 50	51 to 52	53 to 54

AUTOGRAPH HELMET

Our Autograph helmet is just that, a life-sized helmet on which you may collect your favorite drivers' autographs. This helmet is **NOT intended for motorsports use**, it is only to be used as a collector's item to display your autograph collection.
 Colors: White only
10000 • \$219



ADULT HELMET SIZING

Vapor, Draft, Charger, Champ, Cyclone, Super Sport, Velocity and Nitro models.

Impact Racing Size:	Extra Small	Small	Medium	Large	Extra Large	2X
Hat Size:	6 3/4 to 6 7/8	6 7/8 to 7	7 1/8 to 7 1/4	7 3/8 to 7 1/2	7 5/8 to 7 3/4	7 7/8 to 8
Inch Size:	20 5/8 to 21	21 5/8 to 22	22 1/2 to 22 3/4	23 1/4 to 23 5/8	24 to 24 1/2	25 to 25 3/8
CM Size:	53 to 54	55 to 56	57 to 58	59 to 60	61 to 62	63 to 64



HELMET ACCESSORIES

ANATOMY OF A FIRESUIT

WHAT GOES INTO YOUR FULL CUSTOM SUIT

PIPING LOCATIONS

Red areas on this illustration indicate places where we use piping. You have the choice of using any of our standard fabric colors. Piping can be a contrasting color, match your suit color or a combination of both.

COLLAR CHOICES

Wrap-Around

Banded

360° ARM GUSSET - FLOATING SLEEVE

The full-custom suit features a full-floating sleeve via a 360° shoulder gusset for maximum comfort and ease of motion. With this gusset, you will have unrestricted movement, especially in the repetitive forward/backward driving position.

OPTIONAL ARM RESTRAINT

The arm restraint is integrated into the suit sleeve for open-wheel and drag applications and comes with the required hardware and is SFI certified and tagged.

ADJUSTABLE BELT

Infinite adjustment and comfort is possible with our hook and loop closure, standard on all suits.

LUMBAR/LOWER BACK GUSSET

A result of testing and racer feedback, Impact's exclusive new back gusset shape offers unparalleled flexibility and comfort.

RIBBED KNIT CUFF

Pant cuff is gathered at the bottom with a ribbed cuff that tucks into the shoe.

BOOT CUT CUFF

Ribbed cuff on the inside covered by a straight leg cuff on the outside that covers the shoe - like your jeans.

BOX QUILTING

The box quilting of multiple fabric layers in racing suits is based on the principle that air voids between the layers transfer heat more slowly and with less intensity than fabric to fabric contact. These air spaces between the Nomex® layers retard the heat transferred to your body even if the box quilted threads are compromised.

ONE-PIECE STANDARD FIRESUIT SIZING

	Size:	Height	Weight (lbs.)	Chest	Waist	Hips	Torso	Inseam
ADULT	Adult Small:	5'4" - 5'6"	130 - 150	38" - 40"	29"	33"	27"	31"
	Adult Medium:	5'6" - 5'8"	150 - 170	42" - 44"	32"	36"	28"	31"
	Adult Large:	5'8" - 5'10"	170 - 190	46" - 48"	36"	40"	29"	32"
	Adult X-Large:	5'10" - 6'1"	190 - 210	50" - 52"	39"	44"	31"	33"
	Adult 2X-Large:	6' - 6'2"	220 - 240	54" - 56"	44"	47"	32"	33"
YOUTH	Youth Small:	4'1" - 4'4"	50 - 65	27" - 29"	23"	26"	19"	22"
	Youth Medium:	4'3" - 4'7"	70 - 90	28" - 30"	25"	27"	21"	25"
	Youth Large:	4'5" - 4'9"	80 - 100	34" - 36"	27"	31"	23"	27"
	Youth X-Large:	4'7" - 4'11"	90 - 120	35" - 37"	28"	32"	25"	29"

Jerry Coons Jr. is sporting an Impact Style 1 suit designed in blue and white with black trim, black piping and a wrap-around collar. Next to him is our new Eurosport helmet (pg. 8) in flat black with a blue-chrome shield.



CODY GERHARDT & TIM SKOGLUND

DRIVER SUITS



CALL TO ORDER
317-852-3067
 or visit www.impactraceproducts.com

Turner Motorsports NASCAR Nationwide Series driver Jason Leffler in his full custom firesuit getting ready for the 2011 season in the garage at Daytona Motor Speedway.

CUSTOM FIRESUITS

SFI CERTIFIED 3.2A/5

Impact's custom firesuits are made in the USA and are the culmination of over 50 years of race safety experience and continual research and development. Handcrafted of the finest Nomex® materials imported from Europe, our full-custom suit is tailored to fit you perfectly and is the lightest and safest racing garment your money can buy. With 12 colors to choose from, your custom suit can be made in one of our standard styles or your very own custom design and can be embroidered with all of your sponsor and series logos as needed. Available in one-piece or two-piece variations (or three-piece for your OTW crew), our suits are SFI certified and can be rated at SFI 5 with either 2 or 3 layers. Our original founder was the pioneer that introduced the Nomex® firesuit to racing in 1963 and we've been improving the design, function and safety ever since.

FIRESUIT PRICING

	Suit Type	SFI Rating	TPP Rating	Part Number	Base Price†
SFI 5	1-piece / 2-layer	SFI-5	Over TPP 19	26000	\$1299
	2-piece / 2-layer	SFI-5	Over TPP 19	26210/26220	\$1352
	1-piece / 3-layer	SFI-5	Over TPP 28	27200	\$1399
	2-piece / 3-layer	SFI-5	Over TPP 28	27210/27220	\$1454

* Separate jackets and pants are available in all of these configurations and customized to your/our design as well. Please call a sales representative for more info and pricing.

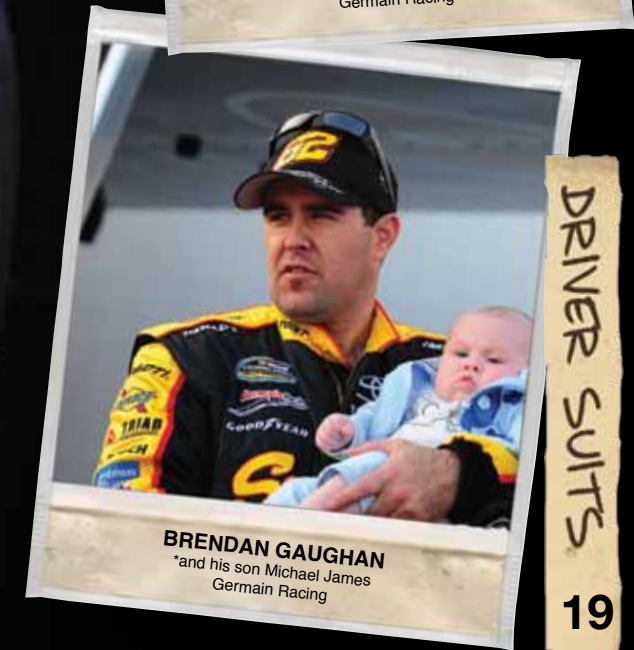
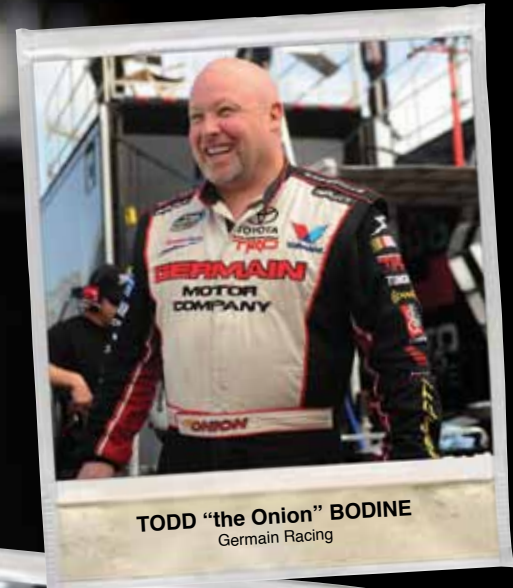
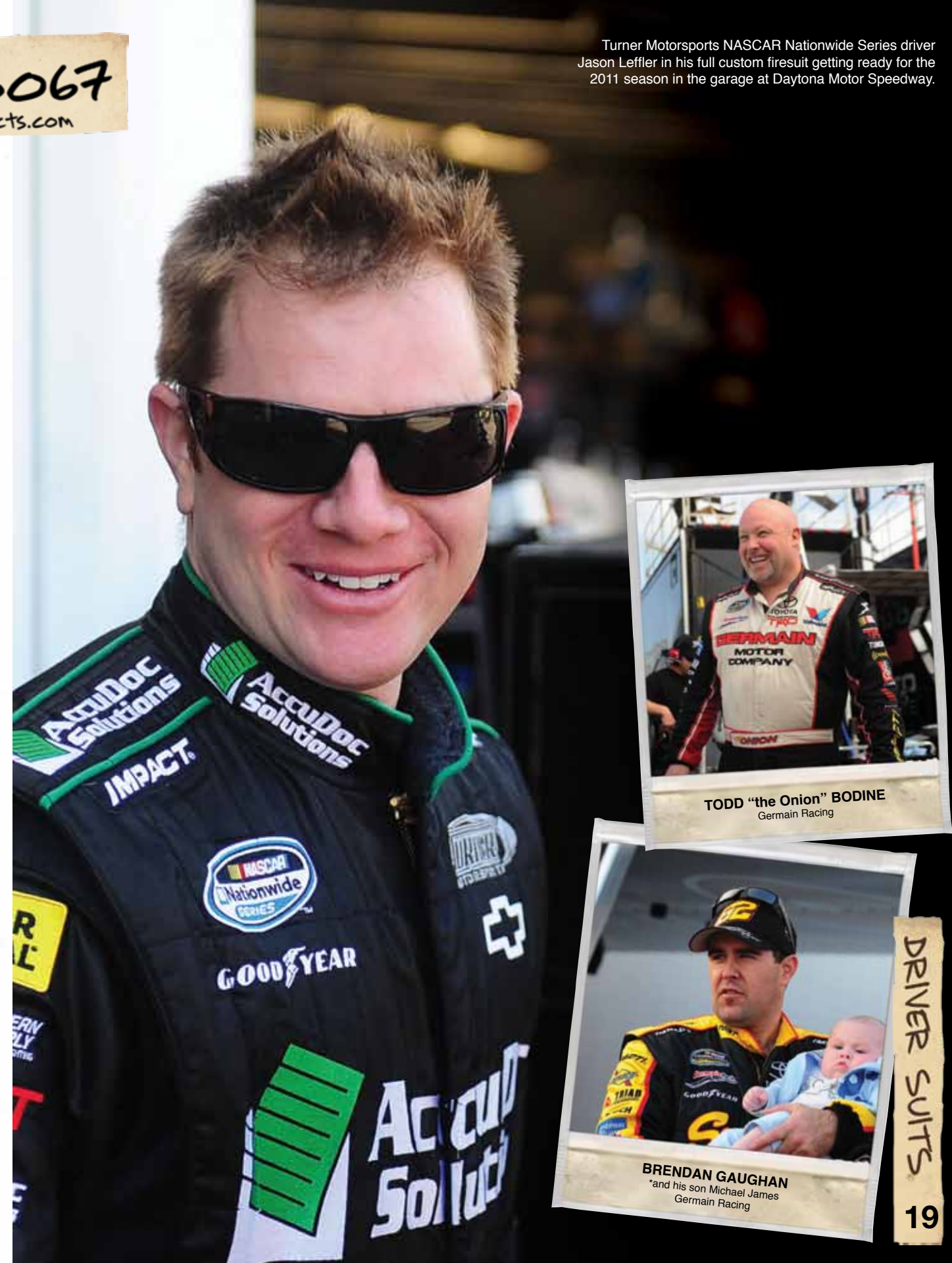
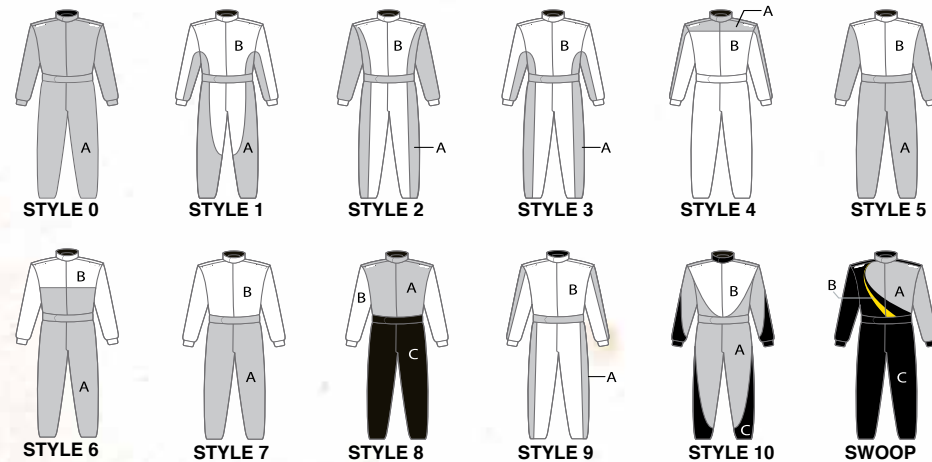
† Base price does not include suit options, custom design, graphics or embroidery. Other charges may apply, please call our helpful sales staff for more info.

ULTRALIGHT NOMEX® FABRIC COLORS



STANDARD SUIT STYLES

Or design your own suit using our available colors above.



CALL TO ORDER
317-852-3067
or visit www.ImpactRaceProducts.com

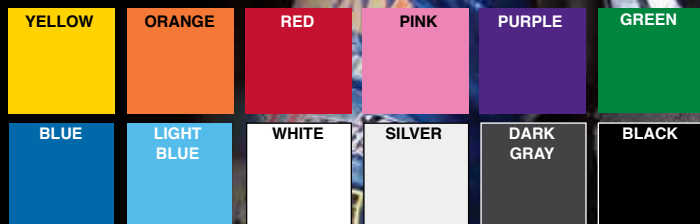
CUSTOM DRAG FIRESUITS

SFI CERTIFIED 3.2A/15 OR 3.2A/20

Impact's custom firesuits are made in the USA and are the culmination of over 50 years of race safety experience and continual research and development. Handcrafted of the finest Nomex® materials imported from Europe, our full-custom suit is tailored to fit you perfectly and is the lightest and safest racing garment your money can buy. With 12 colors to choose from, your custom suit can be made in one of our standard styles or your very own custom design and can be embroidered with all of your sponsor and series logos as needed.

Available in one-piece or two-piece variations, our suits are SFI certified and can be rated at SFI 15 or 20 so we have a suit for you no matter what drag car you're driving.

ULTRALIGHT NOMEX® FABRIC COLORS



CUSTOM DRAG SUIT PRICING

SFI 15 & 20	Suit Type	SFI Rating	TPP Rating	Part Number	Base Price†
	1-piece / drag	SFI-15	Over TPP 60	28200	\$1599
	2-piece / drag	SFI-15	Over TPP 60	28210/28220	\$1654
	1-piece / nitro drag	SFI-20	Over TPP 80	25000	\$1799
	2-piece / nitro drag	SFI-20	Over TPP 80	25010/25020	\$1854

* Separate jackets and pants are available in all of these configurations and customized to your/our design as well. Please call a sales representative for more info and pricing.

† Base price does not include suit options, custom design, graphics or embroidery. Other charges may apply, please call our helpful sales staff for more info.



IMPACT

by **MasterCraft SAFETY™**

Order Direct: (317) 852-3067

Fax Order: (317) 852-8945

Mail to: Impact
1531 Northfield Dr., Suite 400
Brownsburg, IN 46112

If you need help, have a question about a product or service, want to place a custom order or want to check on an existing order please call our Customer Service Department: (317) 852-3067.

Ordered by

NAME _____

COMPANY _____

ADDRESS _____

CITY _____ STATE _____ ZIP _____

EMAIL _____

Contact Phone (required to complete order)

(_____) _____

Shipping Address (leave blank if same)

NAME _____

COMPANY _____

ADDRESS _____

CITY _____ STATE _____ ZIP _____

Order Date

Product Order Form

NUMBER	DESCRIPTION	SIZE	COLOR	QTY	PRICE EA	TOTAL

SHIPPING & HANDLING RATES

Order Subtotal	Rate
\$0.00 to \$99.99	\$13.00
\$100.00 to \$199.99	\$15.00
\$200.00 to \$299.99	\$17.00
\$300.00 to \$399.99	\$19.00
\$400.00 to \$499.99	\$21.00
\$500.00 and over	\$24.00

Rates are for ground shipping within the continental United States only. Call customer service for international and express shipping rates. For C.O.D. add \$11 to base rate.

PRODUCT SUBTOTAL

SHIPPING & HANDLING
Please refer to rates at left to add shipping

SALES TAX
(Add where applicable, IN residents add 7% Tax)

TOTAL

Payment Method: Credit Card, Money Order, Personal Check, Cashier's Check or Certified Check.

Personal Checks will be held until cleared by bank.*
All foreign orders must be prepaid in full in U.S. funds only.

Visa MasterCard Money Order Personal Check Certified Check

CARD NUMBER	_____															
EXPIRATION DATE	/	VERIFICATION CODE (printed on the back of your card)	_____													
CARD HOLDER'S NAME	_____															
AUTHORIZED SIGNATURE	_____															

*\$25.00 processing fee for returned checks

TO PLACE YOUR CUSTOM SUIT ORDER

FILL OUT YOUR GENERAL INFORMATION

CUSTOM SUIT ORDER FORM

CONTACT INFORMATION

Customer Name _____
 Firesuit Ordered For _____
 Address _____
 City _____ State _____ Zip _____
 Telephone _____
 Email Address for Approval _____

PICK A SUIT STYLE AND COLORS

Or design your own look using the custom suit design form on the backside of the order form.



PICK YOUR PREFERENCES AND ADD OPTIONS

The yellow areas must be filled out for every order. If there are multiple options in a yellow section please pick one of the choices, this info is needed to process your order.

FIRESUIT PRICING

	Suit Type	SFI Rating	TPP Rating	Part Number	Base Price
STANDARD	1-piece / 2-layer	SFI-5	Over TPP 19	26000	\$1299
	2-piece / 2-layer	SFI-5	Over TPP 19	26000-2	\$1352
	1-piece / 3-layer	SFI-5	Over TPP 28	27200	\$1399
	2-piece / 3-layer	SFI-5	Over TPP 28	27200-2	\$1454
DRAG	1-piece / drag	SFI-15	Over TPP 60	28200	\$1599
	2-piece / drag	SFI-15	Over TPP 60	28200-2	\$1654
	1-piece / nitro drag	SFI-20	Over TPP 80	25000	\$1799
	2-piece / nitro drag	SFI-20	Over TPP 80	2500-2	\$1854

COLLAR - YOU MUST PICK ONE

CHOICE OF COLLAR (Choose one collar style) _____ Included
 Banded OR Wrap-around

QUILTING - YOU MUST SPECIFY

* most people pick "match suit"

BOX QUILTING (Choose one color) _____ Included
 Specify Color _____ OR Match Suit Color

PIPING - YOU MUST SPECIFY

* see pg. 30 for explanation

PIPING (Specify color for each option or write None) _____ Included
 Collar _____ Armhole _____
 Epaulet _____ Belt _____

NAME EMBROIDERY

* if you want your name on your suit, please tell us where and write legibly and with punctuation if needed

NAME EMBROIDERY (Driver suit only) Belt OR Chest _____ Included
 Embroidery color _____ BLOCK TYPE Script type

SFI TAGS _____ Included

CUFFS - YOU MUST SPECIFY

* see pg. 30 for explanation

COLORED RIBBED KNIT CUFF (Specify color, standard on all suits) _____ Included
 Wrist _____ Ankle _____

STIRRUPS - YOU MUST PICK ONE

LEG STIRRUPS (Choose option) _____ Included
 With Stirrup OR Without Stirrup

BOOT CUT CUFF (Pant leg goes over boot) \$60.00

PATCH POCKET - BACK OF PANT (Driver suit only) \$30.00

BUILT-IN ARM RESTRAINTS (Driver suit only) \$55.00

IMPACT RACING EMBROIDERY Free & Optional
 Location(s) _____

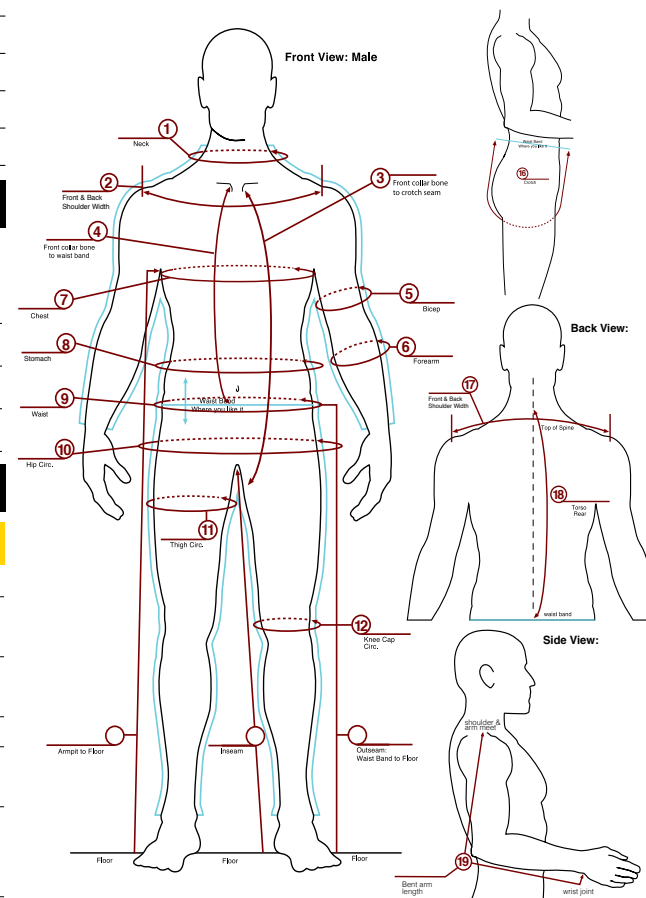
CUSTOM EMBROIDERY (Logos & graphics) Send art for quote
 CUSTOM DESIGNED SUIT (See design forms) Send art for quote

TOTAL SUIT PRICE (Add base price & options) Send art for quote

* The "Total Suit Price" does NOT include custom design, custom embroidery, special instructions or shipping.

NOTES

Indicate any special instructions below.



*Fill out form in full

- 1) Neck Circumference: measure at base of neck
- 2) Shoulder: across front shoulder bone to bone
- 3) Full Torso Front: collar bone to waist band
- 4) Upper Torso Front: center collar bone to crotch seam
- 5) Bicep Circumference: flexed largest point
- 6) Forearm Circumference: flexed largest point
- 7) Chest Circumference: deep inhale widest area
- 8) Stomach Circumference: largest point
- 9) Waist Circumference: actual waist at waist band
- 10) Hip Circumference: widest point hips & buttox
- 11) Thigh Circumference: 2" down from crotch
- 12) Knee Cap: at knee
- 13) Inseam: crotch seam to floor
- 14) Armpit to floor:
- 15) Outseam: waist band to floor:
- 16) Crotch: front waist band to back waist band
- 17) Shoulder back: across the back shoulders bone to bone:
- 18) Upper Torso Rear: t-shirt collar to waist band
- 19) Bent Arm Length: top of shoulder to wrist:



IMPACT LOGOS - OPTIONAL

ONE-PIECE STANDARD FIRESUIT SIZING

	Size:	Height	Weight (lbs.)	Chest	Waist	Hips	Torso	Inseam
ADULT	Adult Small:	5'4" - 5'6"	130 - 150	38" - 40"	29"	33"	27"	31"
	Adult Medium:	5'6" - 5'8"	150 - 170	42" - 44"	32"	36"	28"	31"
	Adult Large:	5'8" - 5'10"	170 - 190	46" - 48"	36"	40"	29"	32"
	Adult X-Large:	5'10" - 6'1"	190 - 210	50" - 52"	39"	44"	31"	33"
	Adult 2X-Large:	6' - 6'2"	220 - 240	54" - 56"	44"	47"	32"	33"
YOUTH	Youth Small:	4'1" - 4'4"	50 - 65	27" - 29"	23"	26"	19"	22"
	Youth Medium:	4'3" - 4'7"	70 - 90	28" - 30"	25"	27"	21"	25"
	Youth Large:	4'5" - 4'9"	80 - 100	34" - 36"	27"	31"	23"	27"
	Youth X-Large:	4'7" - 4'11"	90 - 120	35" - 37"	28"	32"	25"	29"



CALL TO ORDER
317-852-3067
or visit www.ImpactRaceProducts.com

CREW FIRESUITS

SFI CERTIFIED 3.2A/5

We can outfit your over-the-wall crew in our firesuits as well. Available in one-, two- and three-piece suits to fit the requirements and tastes of everyone on the team (a one-piece suit for your fueler and two or three-piece suits for everyone else). Our crew uniforms have special additions and features to withstand the rigors of crew work with reinforced seams in high-stress areas, additional fabric wear patches, a roomier cut for your high-mobility needs and large cargo/tool pockets.

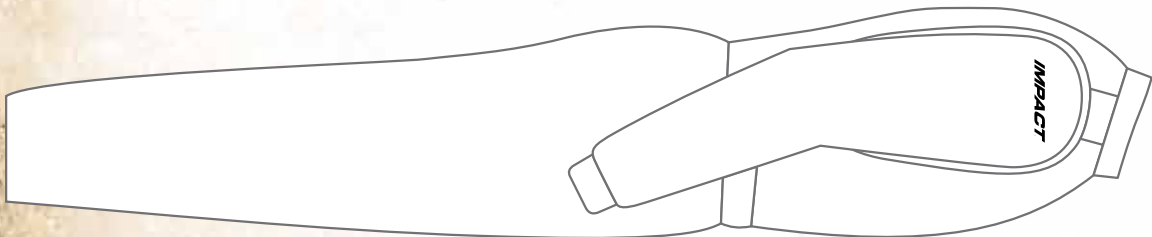
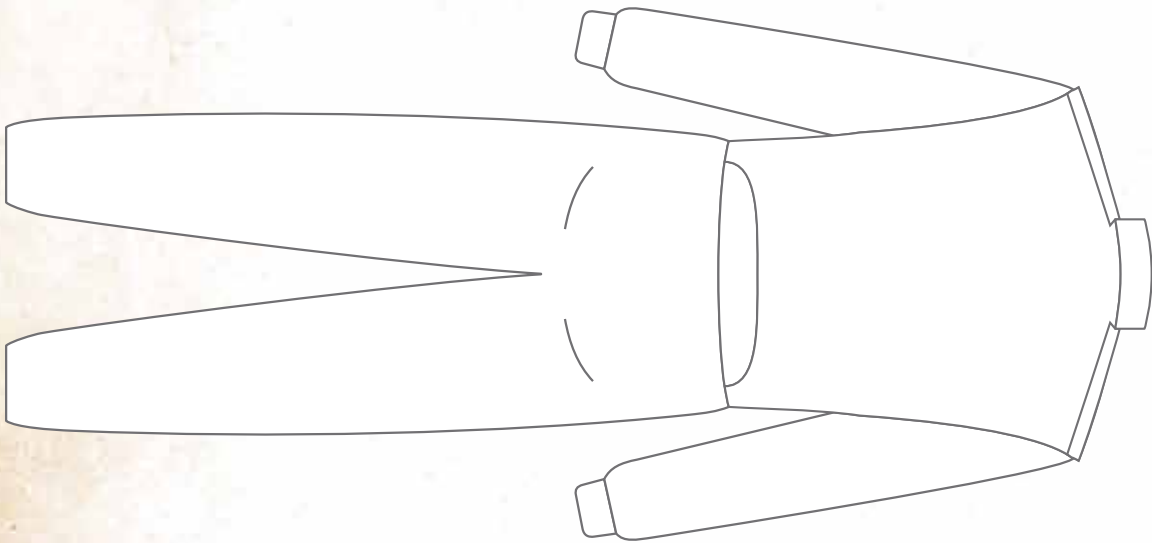
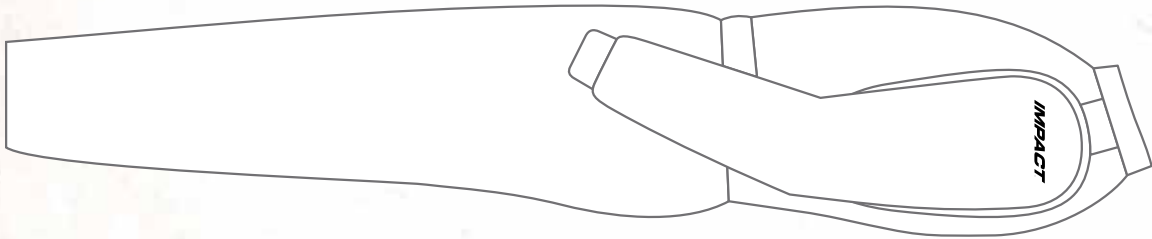
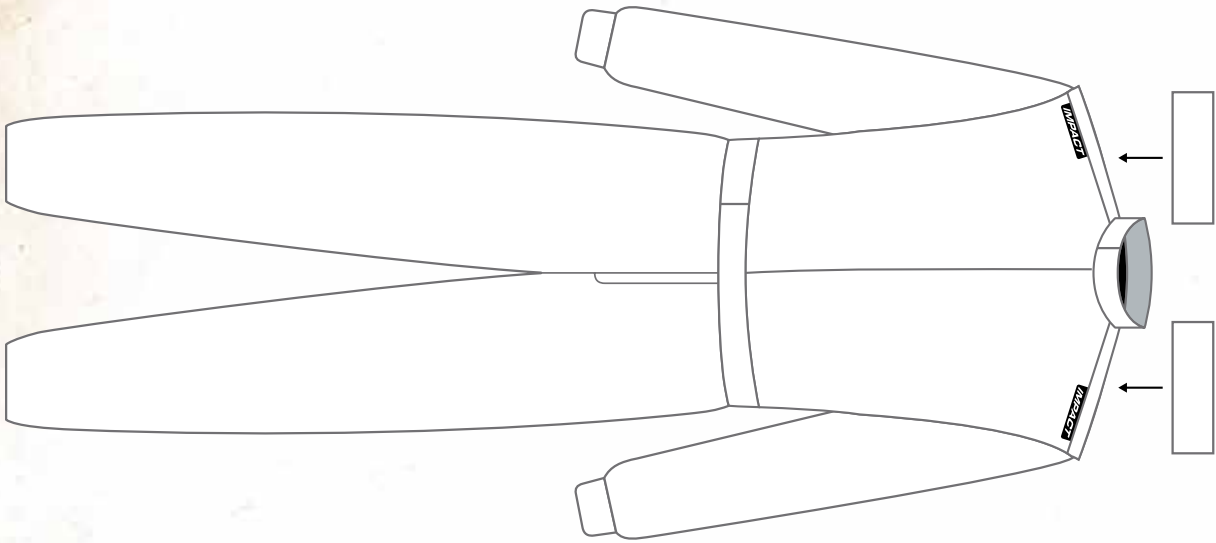
CREW FIRESUIT PRICING *Available in standard sizes only!

Suit Type	SFI Rating	TPP Rating	Part Number	Base Price [†]
Over Vest Only / 2-layer	SFI-5	Over TPP 19	22200	\$355
Undershirt Only / 2-layer	SFI-5	Over TPP 19	22100	\$320
Pants / 2-layer	SFI-5	Over TPP 19	23100	\$480
Jacket Only / 2-layer	SFI-5	Over TPP 19	26210	\$740
Pants Only / 2-layer	SFI-5	Over TPP 19	23100	\$480
1-piece / 2-layer	SFI-5	Over TPP 19	24300	\$1299

[†]Base price does not include suit options, custom design, graphics or embroidery. Other charges may apply, please call our helpful sales staff for more info.

CUSTOM SUIT DESIGN FORM

Use this template to draw your suit design/colors and show us your sponsor placement, and don't worry about being an artist, we can work from your sketches and make your custom suit exactly how you want it.



NAME _____

TELEPHONE _____



NOMEX® UNDERWEAR

Impact's driver underwear is made of fire-retardant Nomex® and comes in our exclusive white ImpactMAX® and is extremely durable and moisture-managing and has superior thermal performance. Our underwear is soft, comfortable and breathable. Available in short sleeve or long sleeve tops, bottoms and dual or single-eye balaclavas, Impact's underwear works perfectly with our firesuits as that extra layer of protection. We suggest every driver wear a set of fire-resistant underwear even if not required by your sanctioning body.

ImpactMAX® UNDERWEAR - White

Item	Sizes	Part Number	Price
Long Sleeve Top:	XS - 2XL	78400	\$99
Short Sleeve Top:	XS - 2XL	78300	\$99
Bottoms:	XS - 2XL	78500	\$99
Balaclava (single or dual eye):	One Size	74000/74100	\$42

Nomex® Socks • 79000 • \$31



TEAM DRAG™

SFI CERTIFIED 3.2A/15 OR 3.2A/20

In 2010 the NHRA will require the drivers of any car that runs 7.5 seconds or faster to have a SFI 15 rated suit, so you're probably looking for a more affordable SFI 15 rated drag suit. If so, look no further, the 2-piece Impact Team Drag™ is for you. Featuring all the same high-quality features as our custom drag suits (floating 360° sleeves, ribbed knit leg cuff and front patch pockets) and including built-in arm restraints, the Team Drag™ is made of high-quality imported European Nomex®.

The last thing you need to worry about at 200+ MPH is your safety, let 50+ years of experience protect you.

Available as a SFI 15 or SFI 20 suit, two-piece only.

Adult Sizes: S/M/L/XL/2X

Colors: Black/Red/Blue w/Silver piping



SFI 15 • TWO-PIECE SUIT \$1229 • JACKET \$629.50 • PANTS \$599.00

SFI 20 • TWO-PIECE SUIT • \$1329 • JACKET \$678 • PANTS \$651



TEAM ONE™

SFI CERTIFIED 3.2A/5

Looking for a suit that's a step between the Racer and a full-custom suit? Well, look no further. Our Impact Team One™ suit comes with all the same high-quality features as the Racer (floating 360° sleeves, expandable lumbar gusset, boot cut leg cuff and inset front pockets), but with a higher-quality semi-gloss finish Nomex® outer shell. The Team One comes with a wrap-around collar and is only available in standard sizes and as a one- or two-piece suit, the Team One suit will still fit your budget and keep you looking good race after race.

Adult Sizes: S/M/L/XL/2X

Colors: Black/Red/Blue w/matching piping



ONE-PIECE • 21000 • \$899

JACKET ONLY • 21010 • \$545

PANTS ONLY • 21020 • \$410



QUARTER MIDGET/JR DRAG

SFI CERTIFIED 3.2A/5

The Impact Quarter Midget/Junior Drag firesuit is designed with the growing racer in mind and constructed with the same high-quality Nomex® that we use on our Racer suits. Wide shoulders, 360° arm gussets, ribbed arm and ankle cuffs and a tapered collar are all standard on the QM suit. We also included built-in arm restraints and an inset pants pockets. Put your young racer in the best quality suit available with Impact's QM/JDR suit.

Youth Sizing: S/M/L/XL

Colors: Black with Silver piping only.

ONE-PIECE • 21400 • \$399

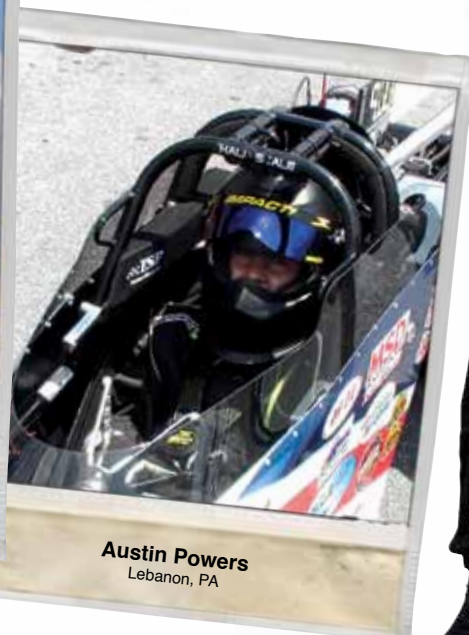
JACKET ONLY • 22700 • \$249



Marissa Polizzi
Santa Rosa, CA



Victoria & Nick Hines
Albuquerque, NM



Austin Powers
Lebanon, PA

CALL TO ORDER
317-852-3067
or visit www.ImpactRaceProducts.com



THE RACER™

SFI CERTIFIED 3.2A/5

Impact's Racer™ offers the best value in American-made racing suits today. The Racer may be moderately priced but it's not modest on features or quality. Hand made to exacting standards by the same hands that build our custom firesuits, this suit is what the budget-minded racer needs. Compare all the standard features of the Racer against the Simpson STD 19 and the Sparco Standard suits. Are you paying extra for floating 360° sleeves, boot cut leg cuffs and an expandable lower back gusset? Not here. The Racer is made of a Matte-Finish Futura Nomex® and comes standard with all of those "extra" options that you pay for somewhere else. The Racer also comes standard with our ImpactMAX cool and comfortable fire-resistant liner, box quilting, a wide athletic shoulder silhouette, inset front pants pockets, a banded collar and adjustable hook and loop fastened belt. Available in one- or two-piece versions and in standard sizes, the racer provides the best quality suit for the price.

Adult Sizes: S/M/L/XL/2X

Colors: Matte Black/Matte Red/Matte Blue w/Silver piping

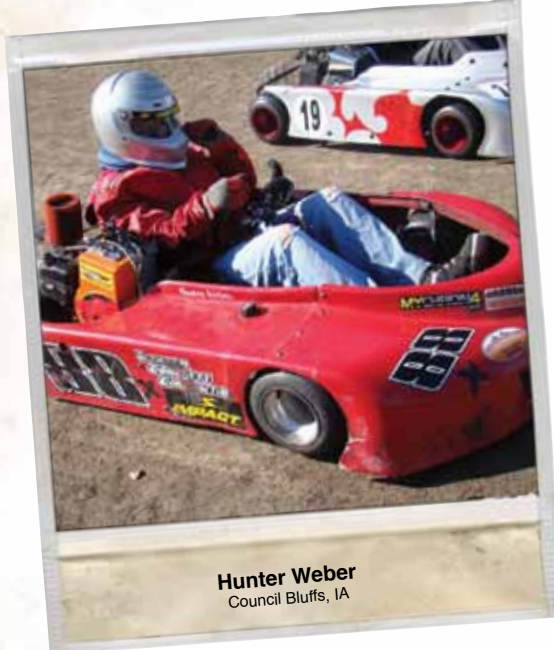


ONE-PIECE • 24200 • \$599

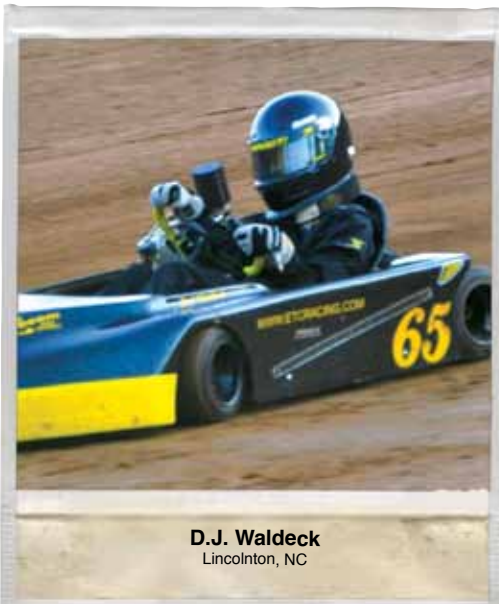
JACKET ONLY • 22500 • \$335

PANTS ONLY • 23300 • \$310

DRIVER SUITS
27



Hunter Weber
Council Bluffs, IA



D.J. Waldeck
Lincolnton, NC

**MADE IN THE
USA**



STANDARD KART JACKETS/SUITS

Impact's Kart Suits are hand constructed here in the USA of top-quality, high-abrasion resistant Cordura nylon with a cool, lightweight mesh interior. Available as a one-piece suit or jacket only, the Impact kart suit features strategically placed suede forearm and elbow patch, adjustable belt with hook and loop closure, a tapered collar for easier use of neck supports, 360° floating arm gusset, and expandable lumbar gusset (on one-piece suit only). Kart suits are **NOT FIRE-RETARDANT** and should not be used in place of a fire-retardant race suit!

Youth Sizes: S/M/L/XL

Adult Sizes: S/M/L/XL/2X

Colors: Black Only w/matching piping

YOUTH 1-PIECE SUIT • 21500 • \$199

YOUTH JACKET ONLY • 22600 • \$125

ADULT 1-PIECE SUIT • 21200 • \$275

ADULT JACKET ONLY • 22300 • \$139

CUSTOM SUBLIMATED CREW SHIRTS

Impact has launched our new line of sublimated crew shirts, so deck out your team/crew in custom shirts that stand out and bring attention to your race endeavors and your sponsors. Virtually any design can be transferred to these high-quality polyester shirts. Want them to match your driver's suit? Want them for a specific event or two race sponsorship? Want them for your trackside employees? Need some shirts for your non-race activities (sports teams, charity event, etc)? No problem. We can make shirts look like just about anything you can think of, so just let us know what you need and we'll make it happen. These shirts come in either our standard polyester fabric or a cool and comfortable no-hole mesh and can come with a variety of options like a hidden full-snap or 1/4-zip front closure, a Mandarin (banded) collar or standard collar (with or without a snap-down option) and an inset chest pocket.

Youth Sizes: S/M/L

Adult Sizes: XS/S/M/L/XL/2X/3X/4X/5X

STD POLY • 84300 • \$99

MESH POLY • 84301 • \$99

Options:

CHEST POCKET • 84311 • \$10

SNAP-DOWN COLLAR • 84322 • \$5

NO SET UP FEES!

NO MINIMUM ORDER!



Bob Tasca III
NHRA Driver doing a NASA Simulator

CALL TO ORDER
317-852-3067
or visit www.ImpactRaceProducts.com



Randy Hannagan Race Team
Pittsboro, IN



MSRA OFFICIALS
Beebe, AR

CREW SHIRTS

CALL TO ORDER
317-852-3067
 or visit www.ImpactRaceProducts.com



G1 OPEN WHEEL™

Designed specifically with the needs of today's open wheel racer in mind, our G1 Open Wheel™ glove is constructed of soft knit fire-resistant Nomex® and features outside seams on the palm side for a close fit and feel. Padded, super soft, form fitting suede covers the palm, fingers and fourchettes providing comfort and abrasion resistance, while the long gauntlet extends forearm coverage.

Adult Sizes: S/M/L/XL/2X

Colors: Red/Blue/Black
 (2X Black Only)

31000 • \$125



ADULT GLOVE SIZING

To find your glove size, measure around the largest part of your hand over the knuckles while making a fist, excluding your thumb.

Small	7" - 8.5"
Medium	8" - 9.5"
Large	9" - 10.5"
X-Large	10" - 11.5"



G5 PRECURVE™

SFI CERTIFIED 3.3/5

Our G5 Precurve™ glove includes pre-curved fingers with feel-less flat seams for increased comfort and a more natural racing hand position.

The G5's fourchettes are constructed of super soft, form fitting suede lined with a layer of soft knit Nomex and the cuff style gauntlet is designed to fit comfortably around your firesuit. The G5 is also SFI certified and meets the SFI 3.3/5 standard.

Adult Sizes: S/M/L/XL

Colors: Red/Blue/Black
34100 • \$139



G2 / G3 EVOLUTION™

Suede and knit Nomex construction, a cuff-style gauntlet, and a padded (G2) or unpadded (G3) wrap-around palm layer are the hallmarks of our G2 Evolution™ and G3 Evolution™ race gloves. The gloves also feature an ergonomically-designed padded knuckle guard that moves resistance-free with your hand. The G2 and G3 offer extra comfort with the standard feel-less seams that surround the fingers and a lining of soft-knit nomex next to the hand.

Adult Sizes: S/M/L/XL/2X

Colors: Red/Blue/Black
 (2X Black Only)

G2 32000 • \$99

G3 33000 • \$99



G-DRAG™

SFI CERTIFIED 3.3/20

The G-Drag™ glove was designed specifically for use with nitro- and alcohol-fueled drag cars. The multi-layer fire-resistant construction with leather palm meets the SFI 3.3/20 standard. The 3/4 knit fire-retardant wrap-around finger seams unpadded super soft hand-hugging suede palm and inset thumb design keep the G-Drag comfortable all the way to the traps.

Adult Sizes: S/M/L/XL/2X

Colors: Black only
37000 • \$179



G4™

SFI CERTIFIED 3.3/5

The G4™ glove features 3/4 finger seams for a perfect fit and feel, an unpadded wrap-around palm patch and split-knuckle guard for extra comfort and abrasion resistance and an additional layer of fire-retardant material between the leather and your palm. Additionally, the glove is SFI certified and meets the SFI 3.3/5 standard.

Adult Sizes: S/M/L/XL/2X

Colors: Red/Blue/Black/White
 (2X Black Only)

34000 • \$109



C-2 CREW™

Designed for rough use in and around the pits, the C-2 Crew™ glove features a super snug fit for excellent feel and dexterity. The C-2 glove provides tough protection from scrapes and abrasions courtesy of the Tough Tech palm and double needle stitching.

Adult Sizes: S/M/L/XL/2X

Colors: Black only
35100 • \$30

JG4™

SFI CERTIFIED 3.3/5

This junior version of the G4 driving glove offers all the same features as its larger counterpart including an extra layer of fire-retardant material between the outer leather and the palm. Sized specifically for young hands for unprecedented feel and comfort.

Youth Sizes: S/M/L/XL

Colors: Black only
38000 • \$79

YOUTH GLOVE SIZING

To find your glove size, measure around the largest part of your hand over the knuckles while making a fist, excluding your thumb.

Small	6"
Medium	6.5"
Large	7"





H/T BOLT™

SFI CERTIFIED 3.3/5

The H/T Bolt™ is our high-top solution for every racer. Made with our grooved sole for cooling, it provides the perfect blend of comfort, support and pedal feel for control and precision in the cockpit. Reinforced, perforated suede side and heel panels protect high-abrasion areas while allowing the multiple layers to breathe. Adjustable ankle strap and Impact's dual-lacing system make a great fit for both wide and narrow feet so it's sure to fit. The durable outer leather is backed with a plush fire-retardant interior for safety and comfort. Mens Sizes: 7/8/8.5/9/9.5/10/10.5/11/11.5/12/13/14 Colors: Black/Red/Blue * Red and Blue while supplies last 46000 • \$115



M/T SPRINT™

SFI CERTIFIED 3.3/5

The Impact M/T Sprint™ shoe is a mid-top racing shoe built to withstand the high temperatures and wear-and-tear of motorsports, yet is designed to have maximum comfort also. The M/T employs our grooved race sole for cooling, support and precise pedal control. The dual lacing system offers a great fit for both narrow and wide feet and the M/T has a deep Achilles cut-out for maximum range of motion. A fire-retardant inner with plush padding and suede outer make this shoe comfortable and safe in all types of cars. Mens Sizes: 7/8/8.5/9/9.5/10/10.5/11/11.5/12/13/14 Colors: Black/Red/Blue * Red and Blue while supplies last 47000 • \$105



TEAM H/T™

Made with our exclusive textured "flat" sole for more pedal feel and control and designed with reinforced, perforated suede side and heel panels to protect high-abrasion areas, the Team H/T™ is our high-top solution for every racer. Adjustable ankle strap and Impact's dual-lacing system make a great fit for both wide and narrow feet so it's sure to fit. The durable outer leather is backed with a plush fire-resistant interior for safety and comfort. Mens Sizes: 4/5/6/7/8/8.5/9/9.5/10/10.5/11/11.5/12/13/14 Colors: Black only 48000 • \$85

DRAG OVER-BOOT™

SFI CERTIFIED 3.3/20

Our Impact Top Fuel/Top Alcohol Over-Boot, which fits securely over Impact race shoes, is made with our high-quality Nomex® inner and outer and is designed with a full toe to calf zipper and overlock hook and loop extra-length cover. Sizes: Small (5-7)/Med (7-9)/Large (9-11.5)/ XL (11.5-13) Colors: Black only 49000 • \$249



NOSTALGIA DRAG OVER-BOOT™

New for 2010! We will also be offering our Drag Over-Boot as a Nostalgia driver model, made with an aluminized Kevlar outer layer and our our high-quality Nomex® inner layers with the same high-quality features as our standard Drag boot. **NOT SFI CERTIFIED.** Sizes: Small (5-7)/Med (7-9)/Large (9-11.5)/ XL (11.5-13) Colors: Aluminized Kevlar only 49999 • \$295 (see pg.10 for Nostalgia Mask)

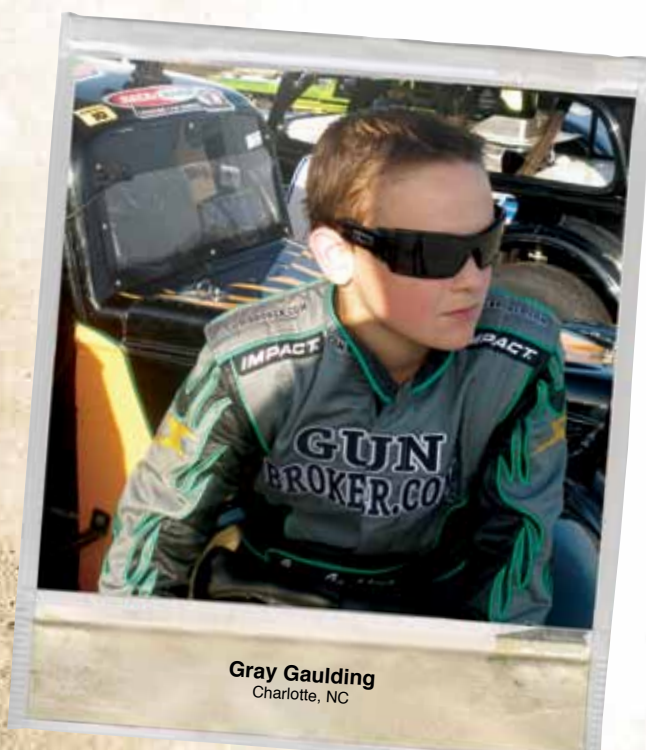


GARAGE SHOE

Our Garage Shoe is made of full-grain leather for low maintenance and high abrasion resistance. A extra layer of leather at the toe cap also helps keep this stylish shoe in good shape and a knobby sole works in all conditions. You will be comfortable in this full-support garage shoe all weekend long. Mens Sizes: 4/5/6/7/8/8.5/9/9.5/10/10.5/11/11.5/12/13/14 Colors: Black only 43000 • \$89.95

SPORT SHOE

The lightweight sport shoe features a molded oil-resistant sole with scalloped channels and a super-padded tongue and low cut ankle. Made of suede with reinforcements in the heel and side panels, the Sport shoe is made for comfort all day long. Mens Sizes: 4/5/6/7/8/8.5/9/9.5/10/10.5/11/11.5/12/13/14 Colors: Black only 44000 • \$59.95



Gray Gauld
Charlotte, NC

CALL TO ORDER
317-852-3067
or visit www.impactraceproducts.com

*Custom chutes with your logo available by custom order, please contact a sales rep for more info.

**MADE IN THE
USA**

NYLON NITRO CHUTE

Impact's crossform chute is designed with 200-300+ mph cars in mind. Made to deploy quickly and consistently, our large chute is a tried and true staple of the drag racing community. The science of parachute design considers: flight stability, deployment force, flow-through, attachment points and packing, and Impact considers all of these facets in our work today so you know our chutes are the best on the market today. Complete chute kits are available as are the individual parts.

Colors: Black/Red/Blue



Complete Set:	77013 • \$465
Black Nomex® Pack Only:	77200 BLK • \$79
Aluminized Kevlar® Pack Only:	77200 SLVR • \$79
Pilot Chute:	77100 • \$89

PRO STOCK CHUTE

Our Nylon Pro Stock drag chutes are the highest quality nylon chute you can buy today and have been used by race teams in all forms of drag racing for years now.

Our founder pioneered the use of chutes in drag racing over 50 years ago and has developed these chutes as the cornerstone of our line. The smaller crossform chute is used for 150-250+ mph cars and comes in a 4-point configuration with pack and pilot chute

Colors: Black/Red/Blue



Complete Set:	77008 • \$386
Black Nomex® Pack Only:	77200 BLK • \$79
Aluminized Kevlar® Pack Only:	77200 SLVR • \$79
Pilot Chute:	77100 • \$89
Air Launcher:	77300 • \$329



Impact's exclusive Pro Stock Air Launcher is designed with a flat-plate launch plate to allow unhindered deployment of the chute's lines, whereas some other brands' launchers snag the lines of the chute as it launches.

77300 • \$329



Don Schumacher Racing's Matt Hagan uses Impact chutes on his funny car.

CALL TO ORDER
317-852-3067
or visit www.impactraceproducts.com

DRAG CHUTES

CALL TO ORDER
317-852-3067
 or visit www.ImpactRaceProducts.com

Impact's new Quick Adjuster hardware now makes your belts even safer and easier to use. Simply pull down on the pull-ends to tighten and pull up on the adjuster's "handle" to quickly loosen.

LATCH & LINK RESTRAINTS

SFI CERTIFIED 16.1

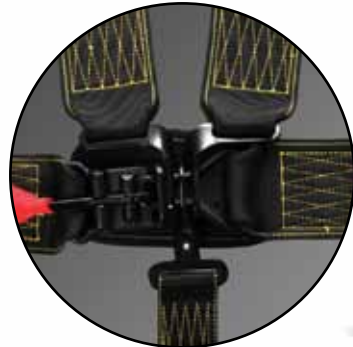
AVAILABLE IN SFI CERTIFIED 16.5 FOR NASCAR USE

Impact restraint systems are proudly made in the USA with the highest-quality parts and craftsmanship money can buy. Our Latch & Link restraint system is the result of years of experience and testing by Impact. All of our restraints feature yellow contrasting stitching for immediate inspection of seam integrity and are SFI Approved and available with 16.1 certification. The basis of our restraints is our exclusive webbing, designed specifically for motorsports. This laterally-ribbed webbing works perfectly with our hardware and adjusters to prevent webbing creep and far exceeds strength requirements for all forms of racing. All belt mounting ends are wrap-around and anchor hardware (bolt-in, clip-in or eyebolts) can be added as needed. Our belt centering system on the pull-ends keeps webbing centered in the adjusters after tightening for proper belt/hardware alignment for maximum effectiveness. Our belts also come with our new and improved Quick Adjuster hardware.

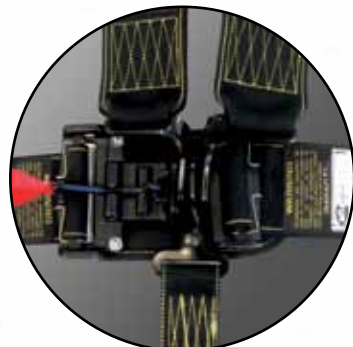
*Our Latch & Link Restraint systems can be made with either our standard Nylon (black) or optional Polyester (gray) webbing, just specify which type you would like when ordering.

Fully custom restraint systems can be made to your exact specifications with any hardware options, belt lengths and configurations, please call for more info. Below is a list of options and a list of standard sets we keep in stock.
\$25 FEE FOR CUSTOM BELTS

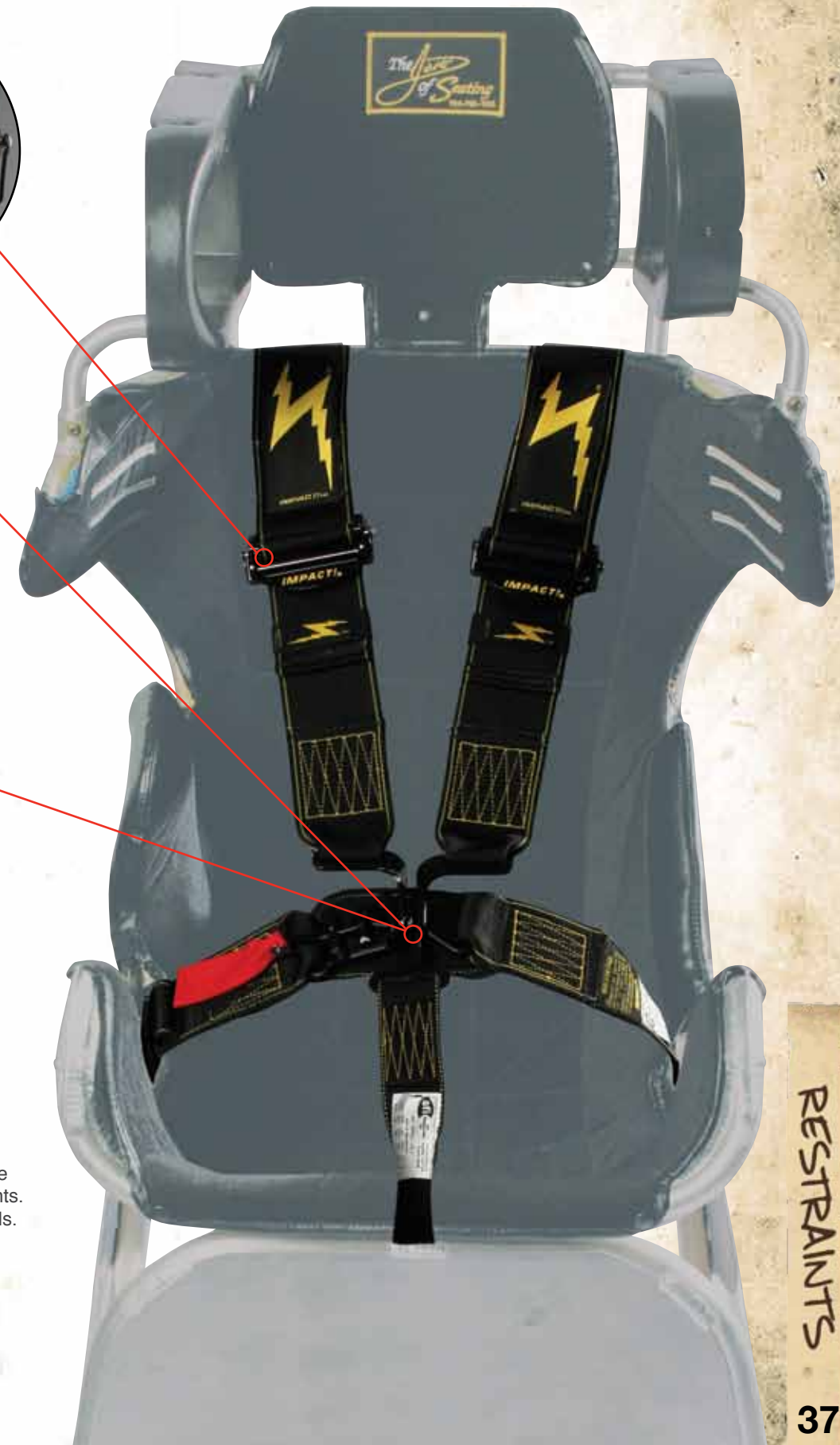
Impact has belt systems that are compatible with all head restraint systems available by special order, please call a sales rep for more information.



STANDARD LATCH & LINK SYSTEM
(5 Point Shown)



INTEGRATED ADJUSTER LATCH & LINK SYSTEM
(5 Point Shown)



STANDARD LATCH & LINK RESTRAINT PRICING

	Restraint Type	Upper Harness	Lap Belt Adjuster	Sub Belt	Base Price [†]
STANDARD	Latch & Link - Standard *SFI 16.1 Certified	Individual OR U-Type OR V-Type	Pull Up OR Pull Down *One OR Both Sides	Single (5) OR Double (6) OR Triple (7)	5/6/7 point system \$139.95
	Latch & Link - Stockcar *SFI 16.5 Certified	Individual	Pull Up OR Pull Down *Right Side Only	Double (6) OR Triple (7)	5/6 point system \$169.95
	Latch & Link - 2" QM/Jr Drag *SFI 16.1 Certified	Individual	Pull Up OR Pull Down *One OR Both Sides	Single (5)	\$99
INTEGRATED ADJUSTER	Integrated Latch & Link *SFI 16.1 Certified	Individual OR U-Type OR V-Type	Pull Down *One OR Both Sides	Single (5) OR Double (6) OR Triple (7)	5/6/7 point system \$139.95

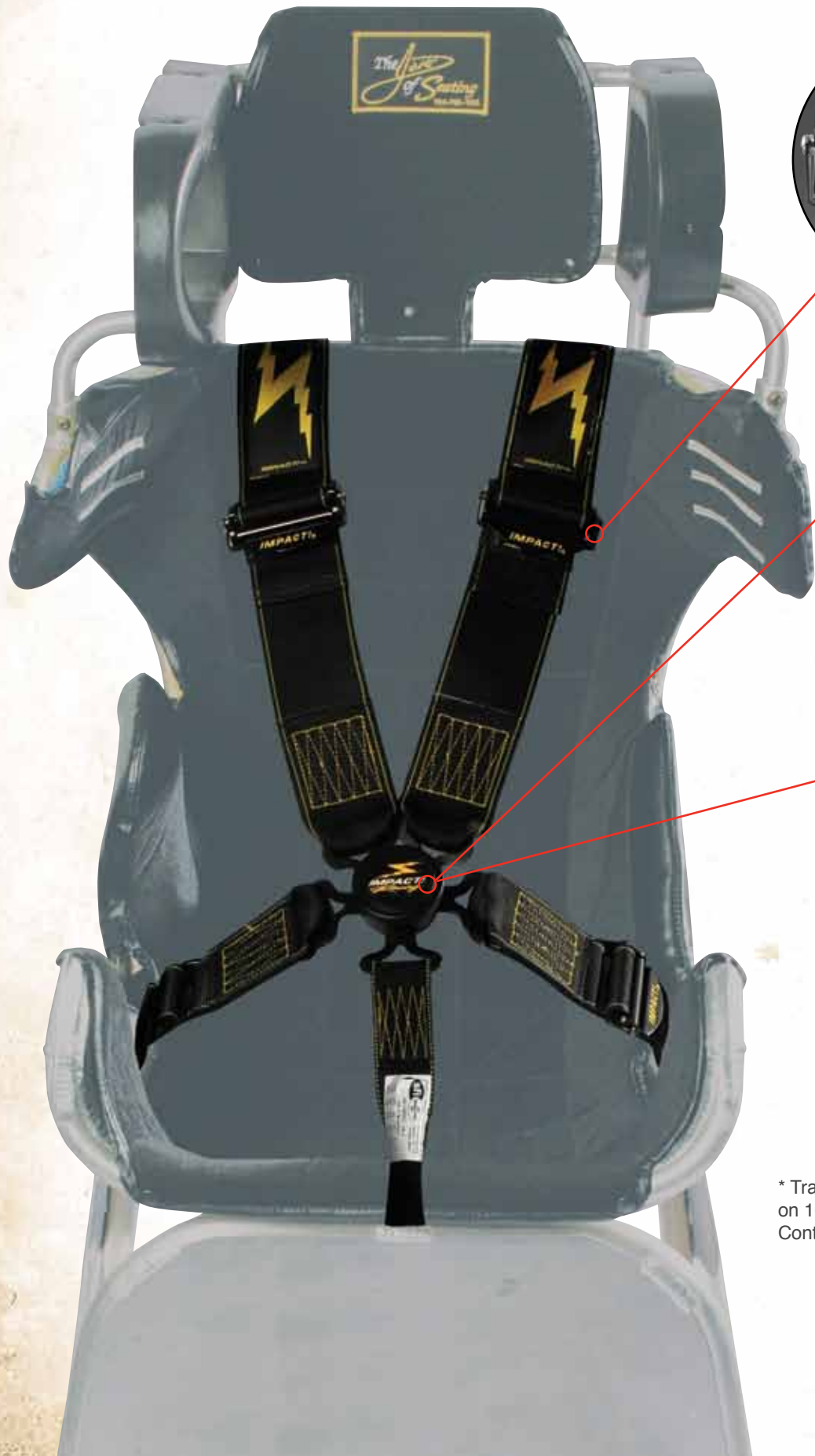
[†] Base price does not include belt options, added hardware or custom orders. Other charges may apply. If you need help, please call our helpful sales staff for more info.

* Trade-in service is available on 16.1 SFI Certified restraints. Contact a sales rep for details.



RESTRAINTS

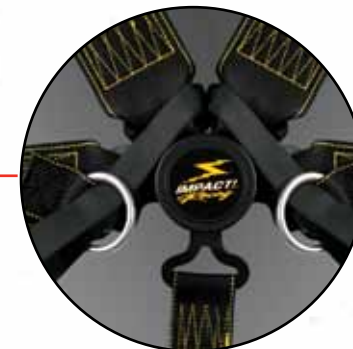
CALL TO ORDER
317-852-3067
 or visit www.ImpactRaceProducts.com



Impact's new Quick Adjuster hardware now makes your belts even safer and easier to use. Simply pull down on the pull ends to tighten and pull up on the adjuster's "handle" to quickly loosen.



STANDARD ROTARY CAM SYSTEM
 (5 Point Shown)



FORMULA ROTARY CAM SYSTEM
 (7 Point Shown)

CAMLOCK RESTRAINTS

SFI CERTIFIED 16.1

AVAILABLE IN SFI CERTIFIED 16.5 FOR NASCAR USE

Impact restraint systems are proudly made in the USA with the highest-quality parts and craftsmanship money can buy. Our unique "lost motion" Rotary Cam System requires rotation past a preset "No Release Zone" to disengage the links. This feature combines with the no-snag face plate design to prevent inadvertent disengagement.

The basis of our restraints is our exclusive webbing, designed specifically for motorsports. This laterally ribbed webbing works perfectly with our hardware and adjusters to prevent webbing creep and far exceeds strength requirements for all forms of racing. All belt mounting ends are wrap-around and anchor hardware (bolt-in, clip-in and eyebolt hardware) can be added as needed. Our belt centering system on the pull-ends keeps webbing centered in the adjusters after tightening for proper belt/hardware alignment for maximum effectiveness. Our belts feature contrast stitching on all webbing overlaps for immediate inspection of seam integrity and come with our new and improved Quick Adjuster hardware.

*Our Camlock Restraint systems can be made with either standard Nylon (black) or optional Polyester (gray) webbing, just specify which type you would like when ordering.

Fully custom restraint systems can be made to your exact specifications with any hardware options, belt lengths and configurations, please call for more info. Below is a list of options and a list of standard sets we keep in stock.
\$25 FEE FOR CUSTOM BELTS

Impact has belt systems that are compatible with all head restraint systems available by special order, please call a sales rep for more information.

* Trade-in service is available on 16.1 SFI Certified restraints. Contact a sales rep for details.

STANDARD ROTARY CAM RESTRAINT PRICING

Restraint Type	Upper Harness	Lap Belt Adjust.	Sub Belt	Base Price [†]
Rotary Cam - Standard *SFI 16.1 Certified	Individual OR U-Type OR V-Type	Pull Up OR Pull Down *One OR Both Sides	Single (5) OR Double (6) OR Triple (7)	5/6/7 point system \$299
Rotary Cam - Stockcar *SFI 16.5 Certified	Individual	Pull Up *Right Side Only	Double (6) OR Triple (7)	5/6 point system \$329
Rotary Cam - Drag ¹ *SFI 16.1 Certified	U-Type	Pull Up *Both Sides	Single (5)	\$389
Rotary Cam - QM/Jr. Drag *SFI 16.1 Certified	Individual	Pull Up OR Pull Down *One OR Both Sides	Single (5)	2" OR 3" Belts \$129.95
Rotary Cam - Formula *SFI 16.1 Certified	Individual	Pull Up	Special Configuration for Formula style.	6 Point - \$329 9 Point ² - \$329

¹ 3" Drag style Rotary Cam sets form with Fire-Resistant Nomex cover on webbing. Jr. Drag restraints DO NOT have FR covers.

² 9 Point Formula restraint systems include 4-point upper harness and a 3-point sub belt.

[†] Base price does not include belt options, added hardware or custom orders. Other charges may apply. If you need help, please call our helpful sales staff for more info.



RESTRAINTS

CALL TO ORDER
317-852-3067
 or visit www.ImpactRaceProducts.com

ENTRY-LEVEL POLYESTER RESTRAINTS

SFI CERTIFIED 16.1

In 2010 Impact introduced our new entry-level restraint systems for racers who are looking for a more affordable solution for their entry-level car. Made using high-strength polyester webbing and including our standard, silver finish hardware, the entry-level belts are available in all three of our popular "buckle" styles: latch & link, latch & link with integrated adjuster (shown) and our exclusive rotary camlock with pull-up or pull-down lap belts.



Impact's Standard Adjuster hardware features knurled adjuster bar, heavy-duty spring for a tight hold and our pull-strap for ease of use.

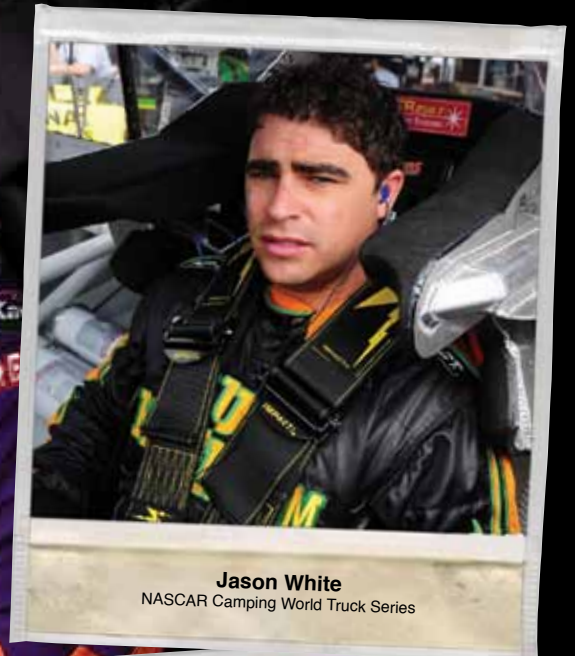
* STANDARD LATCH & LINK AND ROTARY CAM SYSTEMS ARE ALSO AVAILABLE!

ENTRY-LEVEL RESTRAINT PRICING

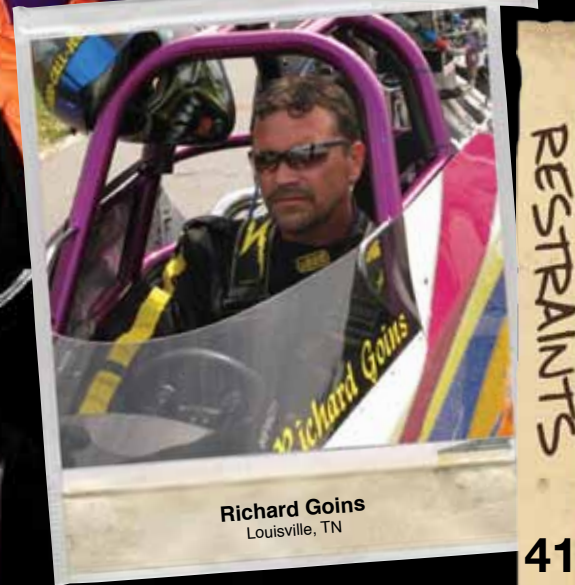
Restraint Type	Upper Harness	Lap Belt Adjuster	Sub Belt	Base Price [†]
Latch & Link - Standard	Individual	Pull Up OR Pull Down *Both Sides	Single (5)	\$109
Latch & Link - Integrated	Individual	Pull Down *Both Sides	Single (5)	\$109
Rotary Cam - Standard	Individual	Pull Up OR Pull Down *One OR Both Sides	Single (5)	\$229

WE CAN MAKE ANY RESTRAINT CONFIGURATION YOU CAN THINK OF!

Fully custom restraint systems can be made here in our Brownsburg, Indiana factory to your exact specifications. You tell us the lengths of each belt, what hardware you want where or any special configurations you may need. We hand make each set and have worked on custom restraints for every type of racer from land-speed cars to drag boats.



Jason White
 NASCAR Camping World Truck Series



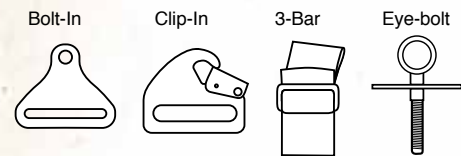
Richard Goins
 Louisville, TN



RESTRAINTS

RESTRAINT END HARDWARE

Bolt-in Anchor Plate (BI):	\$3 each
Clip-in Anchor Plate (CI):	\$4 each
3-bar Adjuster (3B):	\$3 each
Eye Bolt Set (EB):	\$6 each



ARM RESTRAINTS

SFI 3.3 CERTIFIED
Padded arm bands with webbed leashes and two adjustments for both arm circumference and leash length. Meets SFI requirements.
75000 • \$60



HARNESS PADS

Get a pair of Nomex® harness pads that easily fit over your 2" or 3" restraints and are easily removable with hook and loop closure.
50000 • \$37



SPRINT CAR CAGE NET

SFI 37.1 CERTIFIED
Impact's triangular cage net is designed for use on Sprint and Midget car cages and is constructed of 1" resin-reinforced webbing.
TRIANGLE SHAPE • 76000 TRI • \$45



1" straps are ideal for motorcycles, ATVs, watercraft and light equipment.

2" straps feature 5 rows of stitching for higher load rating and quality.

NOT FOR USE AS TOW STRAP



1" x 6' STRAP w/CAM BUCKLE

(also available in 1"x 15')
Rated at 1,200 lbs. max. load, features large, vinyl-coated S-hooks.
400001 • \$9.94



1" x 6' RATCHET STRAP

(also available in 1"x 15')
Rated at 2,800 lbs. max. load, features wide-handle ratchet.
400004 • \$13.28



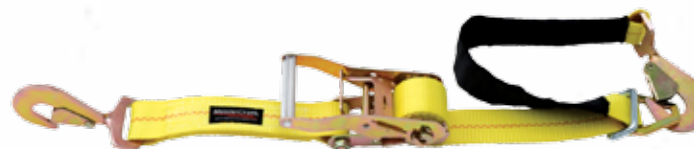
2" x 7' RATCHET STRAP

(w/chain extensions)
Rated at 10,000 lbs. max. load, features anchor hooks on chains.
400012 • \$46.61



2" x 7' RATCHET STRAP

(w/ twisted snap hooks)
Rated at 10,000 lbs. max. load, heavy-duty, features snap hooks at each end for positive attachment.
400014 • \$35.50



2" x 8' RATCHET STRAP

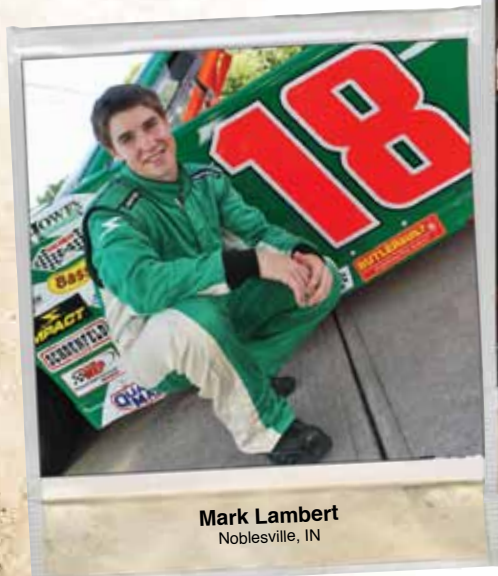
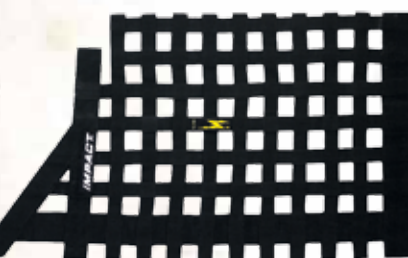
(w/twisted snap hook and axle loop)
Rated at 10,000 lbs. max. load, heavy-duty, features snap hook at one end and axle loop with protective sleeve at the other.
12" of adjustment.
400016 • \$42.17

DRAG LINK STRAP

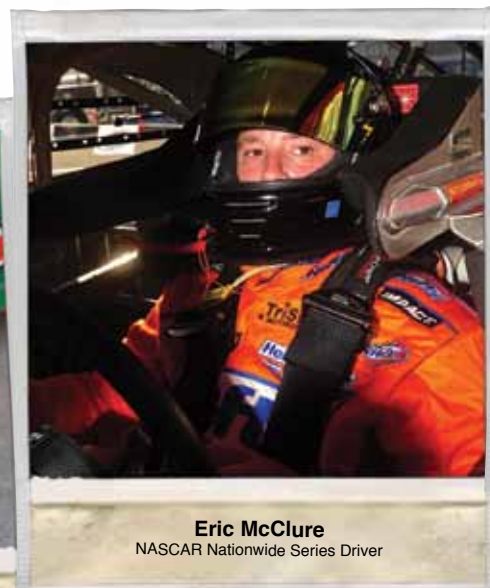
For use in open-wheel racing as an added safety feature to keep the car's drag link tethered to the frame during a crash.
50000 • \$9.99

STOCK CAR WINDOW NET

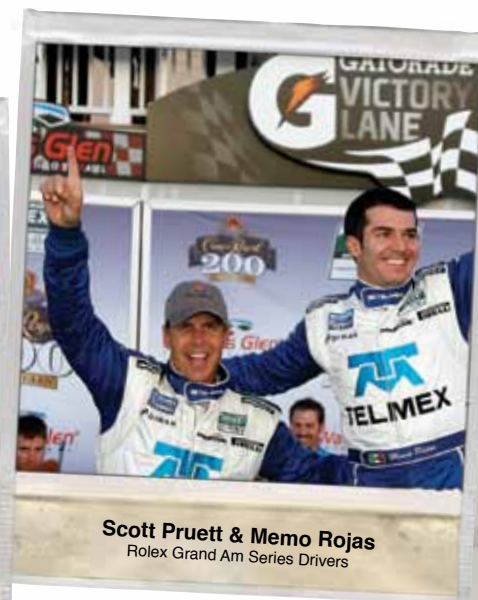
SFI 27.1 CERTIFIED
Impact's window net fits most stock car type race cars and is constructed of 1" webbing with 1" open-weave. Webbing is resin-reinforced to help reduce "flapping" and improve aerodynamic flow. Trapezoid model shown. Custom size by request.
TRAPEZOID SHAPE • 76000 TRP • \$60
SQUARE SHAPE • 76000 SQ • \$45



Mark Lambert
Noblesville, IN



Eric McClure
NASCAR Nationwide Series Driver



Scott Pruett & Memo Rojas
Rolex Grand Am Series Drivers

CALL TO ORDER
317-852-3067
or visit www.ImpactRaceProducts.com

BaldSpotSports.com

877-277-7328

We've been the suppliers of Impact Racing foam helmet liners since the beginning. Now it's time to brace yourself from head to toe with the energy absorbing power of the best multi-impact foam in the business. Offering SFI 45.2 seats, NHRA and Quarter Midget headrest pads, SFI 45.1 rollbar padding, and 3-D scanning services.

- Seat Kits \$175-\$325
- 2-Piece NHRA Head Pad \$495
- 3-Piece NHRA Head Pad \$675
- Quarter Midget Head Pad \$195
- Roll Bar Padding \$18.95
- Ask about our custom seats



RESTRAINTS



SKULL LOGO

A gothic Impact logo and a skull with splatters on a modern looking shirt. A small Impact "bolt" is also on the upper back.
Adult Sizes: S/M/L/XL/2X
Colors: Black only
87200 • \$19.95
* Limited Quantities,
Available While Supplies Last



VERTICAL LOGO

This is our Vertical Logo shirt with the main logo on the front shown and a small Impact "bolt" on the upper back.
Adult Sizes: S/M/L/XL/2X
Colors: Black only
87100 • \$19.95
* Limited Quantities,
Available While Supplies Last



SPEED T

Impact Racing speeds across the chest of this shirt with a small Impact "bolt" on the upper back.
Adult Sizes: S/M/L/XL/2X
Colors: Black only
82200 • \$19.95
* Limited Quantities,
Available While Supplies Last



SKULL SPLASH

Our Impact logo on an edgy splash design with a skull, off-centered on the lower front with a small "bolt" on the upper back.
Adult Sizes: S/M/L/XL/2X
Color: Gray with Black print
87300 GRY • \$19.95
* Limited Quantities,
Available While Supplies Last



CARGO SHORTS

Check out our brand new Impact Cargo Shorts. Featuring front, rear and cargo pockets with embroidered Impact logos, these are great for almost all seasons.
Waist Sizes: 30-42 / Evens only
Color: Black only
20000 • \$29.99



SHATTER LOGO

Impact's logo smashes into the shirt in yellow and gray ink with broken glass and drips.
Adult Sizes: S/M/L/XL/2X
Colors: Black only
87600 • \$19.95
* Limited Quantities,
Available While Supplies Last

DISTRESSED T

A worn and stressed Impact Racing logo wraps around the lower right side of the shirt and a small Impact "bolt" is also on the center upper back.
Adult Sizes: S/M/L/XL/2X
Colors: Black only
87500 • \$19.95
* Limited Quantities,
Available While Supplies Last



IMPACT CREW ONE

Get serious with our Impact Crew one Shirt in this jagged yellow and black style. Designed just like the shirts we make for race teams, this polyester shirt comes with a full hidden-snap front and Impact logos front and back.
Adult Sizes: XS/S/M/L/XL/2X/3X/4X/5X
(3X-5X by special order)
Colors: Black & Yellow
84320 • \$99.95
* Limited Quantities,
Available While Supplies Last

CREW NECK SWEATSHIRT

Our pullover fleece long sleeve crew neck sweatshirt is perfect for staying warm during those late season Saturday night features.
Adult Sizes: S/M/L/XL/2X
Color: Black with White/Yellow print
83400 BLK • \$24.95
Color: Gray with Black/Yellow print
83400 GRY • \$24.95
* Limited Quantities,
Available While Supplies Last



IMPACT CREW TWO

Our Impact Crew Two Shirt features yellow and white stripes on a black polyester shirt. Comes standard with a 1/4 zip front and Impact logos front and back.
Adult Sizes: XS/S/M/L/XL/2X/3X/4X/5X
(3X-5X by special order)
Colors: Black, Yellow & White
84330 • \$99.95
* Limited Quantities,
Available While Supplies Last



IMPACT HOODIE

The Impact pullover features our Impact Racing logo on the front pocket and a large Impact "bolt" on the back. Also available in a zip-up version with the Impact Racing logo on the upper chest.
Adult Sizes: S/M/L/XL/2X
Color: Black with White/Yellow print
ZIP • 87800 • \$34.95
PULLOVER • 87700 • \$29.95
* Limited Quantities,
Available While Supplies Last



IMPACT CREW THREE

With blue and black flames on a white, our Impact Crew Three shirt comes with a 1/4 zip closure front and Impact logos front and back.
Adult Sizes: XS/S/M/L/XL/2X/3X/4X/5X
(3X-5X by special order)
Colors: White, Black & Blue
84340 • \$99.95
* Limited Quantities,
Available While Supplies Last

IMPACT CREW FOUR

Our Impact Crew Four Shirt features blue and black flames and has a 1/4 zip front and Impact logos front and back.
Adult Sizes: XS/S/M/L/XL/2X/3X/4X/5X
(3X-5X by special order)
Colors: Black & Blue
84350 • \$99.95
* Limited Quantities,
Available While Supplies Last



CALL TO ORDER
317-852-3067
or visit www.impactraceproducts.com



PARKA

Our Parka has an outer jacket of 100% Oxford nylon and a inner that is 100% polyester ripstop that zips out giving you total seasonal versatility. Outer jacket features hook and loop front storm flap, inside and outside pockets and a hideaway hood. Inner jacket has a full zip front, elastic cuffs and poly fleece lining. Two versions are available: one has a small Impact Racing logo in silver on the chest and a small "bolt" on the upper back, the other has the same small Impact Racing on the front and a large "original" Impact Logo on the back in yellow and white.

S/M/L/XL/2X

Color: Black only

Small Logo • 83810 • \$119

Large Logo • 83820 • \$119

* Limited Quantities,
Available While Supplies Last



UNISEX CENTERLINE LOGO CAP

96% polyester and 4% spandex black hat with our Impact logo front and center.

Adult Sizes: One size fits most

84100 • \$14.95

* Limited Quantities,
Available While Supplies Last



UNISEX IMPACT BEANIE

Black ski-cap beanie with our Impact logo front and center.

Adult Sizes: One size fits most

84200 • \$14.95

* Limited Quantities,
Available While Supplies Last



ALL OUT JACKET

Impact's all weather jacket comes with a tuck-away hood and lining for those cool days. Dual entry pocket (side and top), internal adjustable cinch waist and inside zippered chest pocket

Adult Sizes: S/M/L/XL/2X

Colors: Black only

83800 • \$99

* Limited Quantities,
Available While Supplies Last

LADIES TANK TOPS

These sleeveless tank-top T's feature our Impact "bolt" on the front center and are perfect for those hot summer days.

Ladies Sizes: S/M/L/XL

Colors: Black or White

83000 BLK • \$19.95

83000 WHT • \$19.95

* Limited Quantities,
Available While Supplies Last



LADIES CAP SLEEVE T

Our Impact Ladies Cap Sleeve shirt features our "bolt" logo on the center chest.

Color: White w/Black sleeves

83100 • \$19.95

* Limited Quantities,
Available While Supplies Last



WOMEN'S IMPACT ONE

White cap sleeve ladies T with a large Impact Racing logo on the front and a small "bolt" on the upper back in pink.

Ladies Sizes: S/M/L/XL

Colors: White only

82700 • \$19.95

* Limited Quantities,
Available While Supplies Last



WOMEN'S IMPACT THREE

Pink cap sleeve ladies T with a large Impact Racing logo on the front and a small "bolt" on the lower back in black.

Ladies Sizes: S/M/L/XL

Colors: Pink only

82900 • \$19.95

* Limited Quantities,
Available While Supplies Last



WOMEN'S IMPACT TWO

White cap sleeve ladies T with a small "bolt" on the front and a larger Impact Racing logo on the back in pink.

Ladies Sizes: S/M/L/XL

Colors: White only

82800 • \$19.95

* Limited Quantities,
Available While Supplies Last

WOMENS' SPORTSUITS

Our womens' sportsuits are made of comfortable zip-up fleece. The jacket has our logo on the front and a large Impact "bolt" on the back, while the pants have Impact across the bottom and a small "bolt" on the front pocket area. With drawstring pants and slightly flared straight legs, this suit is great for a day at the track or while lounging around the house watching your favorite racing on TV. Available as a whole suit or in individual pieces, you can't go wrong with this comfy Impact gear.

Ladies Sizes: S/M/L/XL

Color: Black with Yellow print.

COMPLETE SUIT • 87900 • \$54.95

JACKET ONLY • 87810 • \$29.95

PANTS ONLY • 87910 • \$24.95

Color: Gray with Yellow print.

COMPLETE SUIT • 87900 • \$54.95

JACKET ONLY • 87811 • \$29.95

PANTS ONLY • 87911 • \$24.95

* Limited Quantities,
Available While Supplies Last



CALL TO ORDER
317-852-3067
or visit www.ImpactRaceProducts.com

LIFESTYLE



SUIT TOTE

The Impact suit tote is perfect for carrying and storing your firesuit and made of nylon with 3/4-zip opening and outer zippered pouch.

72100 • \$19.95

* Limited Quantities,
Available While Supplies Last



HELMET BAG

Our helmet bag is extra large to carry your helmet plus accessories and has a soft abrasion-resistant lining to protect your gear. It also features a durable nylon shell and 2/3 radius zipper for easy access.

71000 • \$30



WALLET/CARD HOLDER

Compact and lightweight, this will hold standard sized credit cards, IDs, business cards or currency and is made of the same webbing used in our racing restraints and closes with a hook and loop flap.

85000 • \$9.95

* Limited Quantities,
Available While Supplies Last

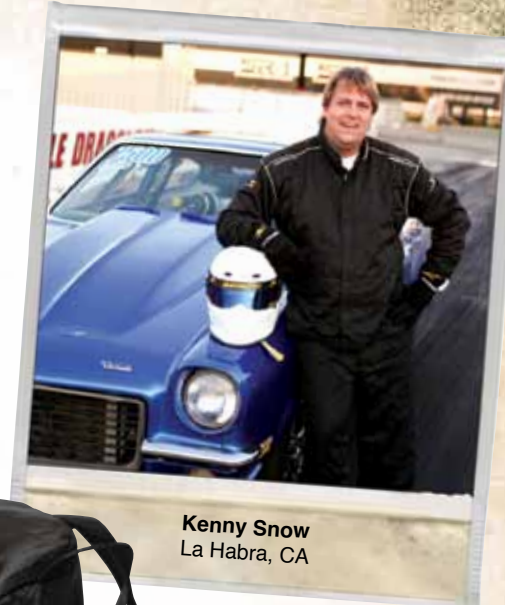
BACKPACK ONLY

We replaced our Impact backpack with a new design in 2009 and it was a hit. In addition to a standard zippered closure, the new pack has a secondary removable front that folds over the bag and clips in/down for added security. This versatile full size backpack is equipped with plenty of pockets and storage. With padded backpack straps and padded back for extra comfort, the backpack strap has a handy zippered cell phone holder and there are chest and waist straps to secure the bag if needed.

Backpack Size: 20" x 15"

81710 • \$49.95

* Limited Quantities,
Available While Supplies Last



Kenny Snow
La Habra, CA



GEAR BAG

Our 3-compartment Gear Bag is designed to hold your helmet, suit, gloves, shoes and accessories, but will readily double as travel luggage if needed. Constructed of heavy-duty nylon with webbed handle and a removable shoulder strap, the Gear Bag has one large main compartment and two 3/4 zip side pockets and a reinforced base to help the bag keep its shape during loading and carrying.

Size: 27" x 12" x 11"

72000 • \$49

* Limited Quantities,
Available While Supplies Last



CANVAS TOOL BAG

Made from heavy canvas with a reinforced bottom and rugged zipper closure, this bag is equipped with two carry handles and a bag strap for mounting. It is great for storing tools, jumper cables, towropes and wrench roll-ups.

Available in Black only.
640142



WALKER BAG

This handy bag was created especially for Walker Evans. Our 10" x 20" bag with zipper closure is made of tough, waterproof and tear-resistant material, padded for durability with two carry handles.

Available in Black, Red, Blue or Yellow.

640126

EAR PLUGS

Our soft foam earplugs compress easily and come with a carrying case with hook chain.

85100 • \$5

* Limited Quantities,
Available While Supplies Last

COOZIE

Perfect for keeping cold drinks cold on hot days at the track, our coozie comes in black with Impact logo on one side.

81000020 • \$1.99

* Limited Quantities,
Available While Supplies Last

PONCHO

Rainy days at the track are no fun, so we've made the Impact rain poncho to save the day. It's waterproof and has a built in hood. Black only with Impact logos front and back.

81000010 • \$4.95

* Limited Quantities,
Available While Supplies Last

FAN PACK

The Impact Fan Pack shown above is all you'll need for a weekend at the track (or anywhere else for that matter). We've stuffed the Fan Pack with goodies to make your trip more enjoyable: a coozie (sold individually above) to keep those drinks cold on those hot days, a blow up seat cushion that has four built-in drink holders, a rain poncho (sold individually above), an emergency blanket in case it gets too cold and a set of earplugs for when you get close to the race action. It includes our new backpack (see above) with plenty of dry storage space in the main backpack section for clothes, shoes or even snacks and a removable cooler bag that clips onto the inside of the backpack. In addition to a standard zippered closure, the new pack has a secondary removable front that folds over the bag and clips in/down for added security. Inside you will find a trendy backpack cooler (see above for picture). This spacious insulated main compartment can hold up to 18 (12oz) cans.

Backpack Size: 20" x 15"

Cooler Size: 17" x 11" x 7.5"

81000 • \$69.95

* Limited Quantities,
Available While Supplies Last

BAGS & TOTES
49

IMPACT HP EYEWEAR

HIGH-PERFORMANCE OPTICS

Impact is proud to announce our new line of high-performance eyewear for use both on and off the track. Only the best G-15 polarized lenses are used in all of our models, with near-medical grade optical quality that cuts glare and reduces UV rays to protect your eyes and give you the clearest vision possible. Our frames come with TR-90 thermoplastic polymer, acetate, stainless steel or aluminum construction and are designed to retain their shape, flexibility and stand against the rigors of an active lifestyle. All models come with a microfibre cleaning cloth, carrying bag and leather hard storage case.



130R
Acetate frames in matte black with G-15 polarized lens.
BLACK • 89031 • \$69.95
** Limited Quantities,
Available While Supplies Last*



AERO
Aluminum frames in matte black or matte blue with G-15 polarized lens.
BLACK • 89161 • \$64.95
BLUE • 89160 • \$64.95
** Limited Quantities,
Available While Supplies Last*



TARMAC
Matte black acetate frames with G-15 polarized lens.
89051 • \$44.95
** Limited Quantities,
Available While Supplies Last*



APEX
Matte black aluminum frames with G-15 polarized lens.
89110 • \$54.95
** Limited Quantities,
Available While Supplies Last*



REDLINE
Injection-molded TR-90 polymer tortoise shell frames with G-15 polarized lens.
89060 • \$49.95
** Limited Quantities,
Available While Supplies Last*



PADDOCK
Injection-molded TR-90 polymer smoke blue frames with G-15 polarized lens.
89070 • \$49.95
** Limited Quantities,
Available While Supplies Last*



EJS SIGNATURE
Matte black acetate frames with G-15 polarized lens.
BLACK • 89171 • \$69.95
** Limited Quantities,
Available While Supplies Last*



HAIRPIN
Aluminum frames in matte black with G-15 polarized lens.
BLACK • 89131 • \$84.95
** Limited Quantities,
Available While Supplies Last*



CHASSIS
Acetate frames in matte black with G-15 polarized lens.
BLACK • 89081 • \$49.95
** Limited Quantities,
Available While Supplies Last*



VERTEX
Matte black aluminum frames with G-15 polarized lens.
BLACK • 89091 • \$59.95
** Limited Quantities,
Available While Supplies Last*



CLUTCH
Matte black aluminum frames with G-15 polarized lens.
89121 • \$54.95
** Limited Quantities,
Available While Supplies Last*



CAROUSEL
Injection-molded TR-90 polymer gloss black frames with G-15 polarized lens.
89041 • \$69.95
** Limited Quantities,
Available While Supplies Last*



GRIP
Aluminum frames in matte black or matte silver with G-15 polarized lens.
BLACK • 89151 • \$64.95
SILVER • 89150 • \$64.95
** Limited Quantities,
Available While Supplies Last*



IMPACT FACTORY SALES AND SERVICE RETAIL STORE IN MOORESVILLE, NORTH CAROLINA

The official factory store is surrounded by stock car race teams and is designed to serve racers, race teams and race fans. The nearly 4000 square foot facility features Impact's entire line and includes a special "Kid's Corner" to keep children entertained while Mom or Dad are shopping.

Whether you're visiting or racing in the popular Charlotte area, the Impact store is another great reason to make a stop in Mooresville, there's no telling who you might run into!

The Impact factory store and showroom is located at 174 Knob Hill Road, Mooresville, NC 28117. Store hours are: Monday through Thursday 8:30-5:30, Friday 8:30-5 and Saturday 9-12.

For more information call (704) 799-0729.



IMPACT OFFICES IN BROWNSBURG, INDIANA

Located in the booming race town of Brownsburg, Indiana, the original Impact factory store is right inside the Impact corporate offices. The showroom is conveniently located 10 minutes from the Indianapolis Motor Speedway and less than 5 minutes from O'Reilly Raceway Park at 1531 Northfield Drive, Suite 400, Brownsburg, Indiana 46112. Store hours are Monday through Friday 9-6.

For more information, call (317) 852-3067.

PRODUCT CARE INFORMATION

Driving Suits

To protect and extend the life of your Impact firesuit, cleaning should be DRY CLEAN ONLY. We recommend specifying perchloroethylene dry cleaning solution only. Your suit may be damaged if washed by machine or by hand.

Driving Gloves

Put gloves on hands and wash by fully submersing in a mild soap and water solution and opening and closing fingers. Squeeze dry while still wearing gloves and hang to drip dry. DO NOT DRY CLEAN OR MACHINE WASH.

Driving Shoes

Excess dirt may be removed with a stiff bristled brush. For stubborn stains, use a mild household cleaner. Suede cleaner will keep your shoes looking their best. Routine maintenance with a water-repelling spray will help increase the life of your driving shoes. Allow shoes to air dry completely before storing. DO NOT MACHINE WASH.

RESTRAINT SYSTEMS

Custom Systems Built to Your Specifications

If the restraint system you need is not listed, Impact will manufacture a system to your specifications. Please call (317) 852-3067 for more information.

Trade-in program

Impact will take your "OTHER BRAND" restraints as a trade-in on a brand new set of Impact 5-point Latch & Link or Rotary Cam Restraints at a special trade-in price: \$85 for Latch & Link and \$145 for Rotary Cam. System features individual shoulder harness, lap belt with single right side adjuster (pull-up or pull-down), and single sub belt. All belt ends are wrap-around. Anchor hardware (bolt-in or clip-in) sold separately.

Impact's quality hardware and on-site manufacturing allows us to replace your Impact Restraint Systems at a substantial savings over buying new. This service includes inspection and replacement of hardware if necessary, webbing replacement and current SFI 16.1 certification. This service is only available for Impact restraint systems. Reweb/replace prices: \$51 for Latch & Link and \$87 for Rotary Cam. *SFI Foundation will not allow 16.1 certification or recertification of Y-Type Shoulders.

CRASH REPLACEMENT POLICY

We understand crashes can happen. To get you racing again, Impact gladly offers replacement products for 33% off the regular price. Return the damaged Impact Racing product to us with a description of the crash in which the item was damaged and your contact information and we'll take it from there.

PRODUCT RETURNS AND SERVICE

To return a product in need of service or inspection or to return a product for a refund or exchange (please return new products in original condition and packaging with invoice), please call (317) 852-3067 to obtain a Return Authorization number. Please indicate the Return Authorization number on the outside of your package and ship to:

Impact Authorized Return
(Authorized Return number)
1531 Northfield Drive, Suite 400
Brownsburg, IN 46112

NO REFUNDS OR EXCHANGES AFTER 30 DAYS

ALL PRICES SUBJECT TO CHANGE

All prices in this catalog are subject to change without notice.

THANK YOU TO THE FOLLOWING PEOPLE FOR HELP WITH THIS YEAR'S CATALOG!

O'Reilly Raceway Park, Scooter Ellis for the sprint car, Alliance Motorsports for the Indy car, Del and Mariah for the bike, Amy Gilligan and the rest of Chip Ganassi Racing, Kelly Clouser, Leslie Anderson and all the drivers and models that helped us out this year.

Photography by: Mark Rebilas, High Rev Photo, Michelle Pemberton, Dave Vaughn and Motorsports Images, Travis Branch, CIA Stock Photo and Getty Images.

Indy and IndyCar are registered trademarks of Brickyard Trademarks, Inc., used with permission.



Death, paralysis, or other personal injury may result while you are engaged in motorsports. Motorsports are an inherently dangerous activity. You assume the risk of injury or death whenever participating in motorsports.

No warranty or representation is made to the product's ability to protect the user from injury or death. As the user, you are responsible for your own actions and decisions. No safety product can completely protect the user from injury or death.

It is the user's responsibility to become familiar with all available information concerning the correct use and limitations of all products prior to participating in motorsports.

